

GRIEVE  
GILLET  
ARCHITECTS

ARCHITECTURE  
INTERIORS  
URBAN DESIGN  
HERITAGE

HERITAGE ARCHITECTURE

CAPABILITY PROFILE



ARCHITECTURE  
INTERIORS  
URBAN DESIGN  
HERITAGE

243 Pirie Street Adelaide  
South Australia 5000

T +61 8 8232 3626  
admin@ggarc.com.au

**ggarc.com.au**

*Cover image: Adelaide Studios*

# HERITAGE ARCHITECTURE

## CONTENTS

|    |                                      |    |
|----|--------------------------------------|----|
| 1_ | INTRODUCTION                         | 5  |
| 2_ | APPROACH                             | 7  |
| 3_ | EXPERIENCE                           | 9  |
| 4_ | SELECTED PROJECTS                    | 13 |
| 5_ | OUR PEOPLE                           | 69 |
| 6_ | GRAPHIC CAPABILITY                   | 71 |
| 7_ | BUILDING INFORMATION MODELLING (BIM) | 73 |
| 8_ | SELECTED AWARDS + ACHIEVEMENTS       | 75 |
| 9_ | TESTIMONIALS                         | 77 |



BROOKMAN BUILDING CONSERVATION WORKS



# 1\_ INTRODUCTION

---

**Grieve Gillett Architects is an award-winning architectural, interior design, heritage and urban design practice based in Adelaide, South Australia.**

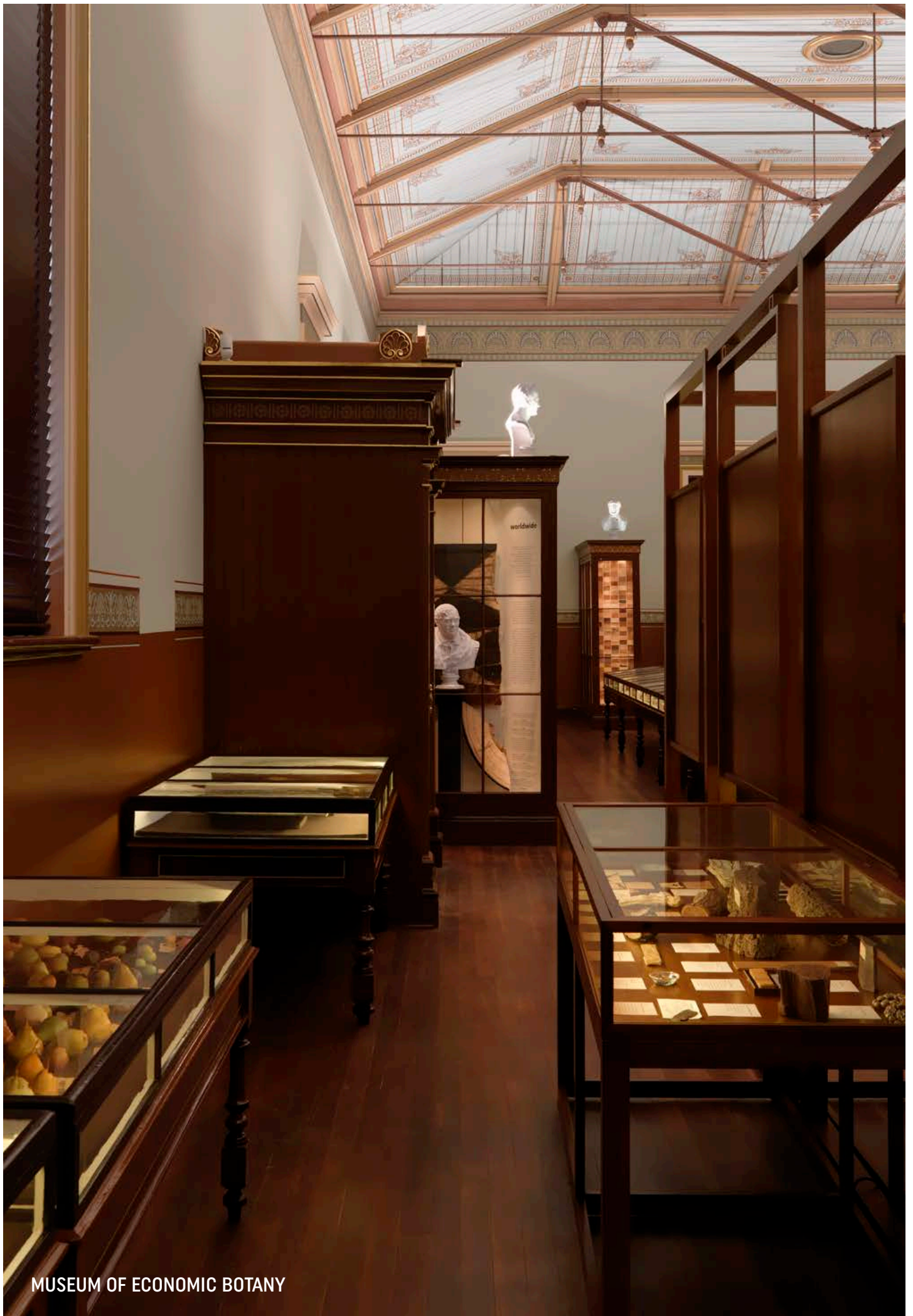
**We have over 40 years of experience through the completion of a wide range of projects from commercial and retail developments, including tourism facilities, cafes, restaurants and cellar doors, performing and visual arts venues including theatres, galleries and museums, public buildings and education facilities across B-12 and tertiary institutions, transport and infrastructure, urban design and master planning, and residential projects.**

GGA places a high value on community, culture and collaborative work practice.

We are committed to achieving quality outcomes. We know that our environment influences every facet of our lives. In the workplace, the home or the public realm, high quality design elevates the spirit and has a profound effect on our wellbeing.

At GGA we:

- have proven that quality design does not need to equate to high construction costs
- regard problems as opportunities for creative outcomes
- define expectations by asking the right questions
- know that teamwork leads to better outcomes
- respect and respond to context
- produce architecture that minimises energy use, provides choice, flexibility and enhances wellbeing.



MUSEUM OF ECONOMIC BOTANY

## 2\_ APPROACH

---

### HERITAGE SERVICES

Our heritage experience includes a diversity of project services including:

- Conservation Architecture
- Contextual Design
- Adaptive reuse Architecture
- Heritage Value Assessments
- Alterations and additions to heritage listed buildings
- Heritage Advisory Services for local government
- Preparation of conservation management plans and heritage surveys
- Provision of expert opinion heritage advice

### BEST PRACTICE

All work is informed by principles of The Burra Charter and current Australian conservation policy and practice. We utilise 'best-practice' analysis and repair methods when documenting the conservation of heritage fabric. We approach every heritage project with the attitude – do as little as possible and as much as is necessary – to maintain significant building fabric and not diminish the interpretation of heritage value.

### INDEPENDENT ASSESSMENT OF HERITAGE VALUE

All decisions regarding the conservation of a place are based on a thorough understanding of the key attributes which contribute to the heritage value of the place. This approach provides a clear understanding of the important attributes and values of each heritage place, so negotiations regarding heritage value and proposed conservation and adaptation works can be successfully negotiated with state authorities.

### QUALITY

Our studio environment is underpinned by a robust organisation and management system. We are independently third party ISO 9001:2000 accredited and prequalified with the South Australian Government in the highest category.

### HERITAGE AS A 'LIVING' CONCEPT

Grieve Gillett Architects considers heritage as a living concept, not a static, academic one. As heritage architects, we aim to balance the needs of property owners, conservation standards and a sound understanding of regulatory acts, in both South Australia and Victoria. This is of particular importance within South Australia, where client financial constraints and other (often more important) priorities need to be balanced against the 'ideal' heritage outcome for a particular situation.

### DELIVERY

The majority of our workload derives from repeat business. We balance design enquiry, functional objectives, technical knowledge and collaboration to create design solutions that deliver functional and sustainable architecture that meets our clients' expectation. We deliver projects of awarded excellence, balancing the constraints of time, quality and budget.

### INTEGRATION

GGA designs in an integrated way, one that embraces engineers, contractors, specialists, planners and of course clients. Through collaboration, ideas flow freely and the syntheses of ideas generate sustainable, responsive design solutions.

### SUSTAINABILITY

We are committed to sustainable and socially responsible design. Adaptive re-use projects are inherently sustainable. Finishes and materials are typically selected to maximise life span and serviceability. We support the use of traditional trades and materials as a sustainable outcome.





ST MARY'S COLLEGE DEVELOPMENT BOYLAN BUILDING

## 3\_ EXPERIENCE

Grieve Gillett Architects offer services in architecture, master planning, feasibility studies and 3D visualisations. Our work ranges from the macro to micro scale in urban, regional and remote locations.

### ARTS, CULTURE + TOURISM

- Theatres
- Galleries
- Museums
- Exhibition design
- Festival infrastructure and temporary venues
- Function spaces

### COMMERCIAL, RETAIL + HOSPITALITY

- Office buildings
- Workplace fitouts
- Retail
- Tourist facilities including cafes and restaurants
- Winery cellar doors
- Mixed use developments
- Industrial facilities

### MASTER PLANNING

- Cultural precincts
- Heritage precincts
- Retail precincts
- Universities
- Health
- Education
- Aged care
- Residential

### URBAN DESIGN

- Streetscapes
- Campus design
- Tourist precincts
- Precinct plan

### ASSESSMENT

- Condition assessment
- Compliance assessment
- DDA assessment

### HEALTH

- Dental clinics
- Community mental health facilities
- Hospital master planning
- Aged care
- Healthcare administrative facilities

### EDUCATION

- Child care and early learning centres
- Public and private schools
- TAFE
- Universities

### HERITAGE ARCHITECTURE

- Conservation works
- Conservation Management Plans
- Heritage Development Plan Amendments
- Heritage Advisory Services to local councils
- Adaptive Re-use

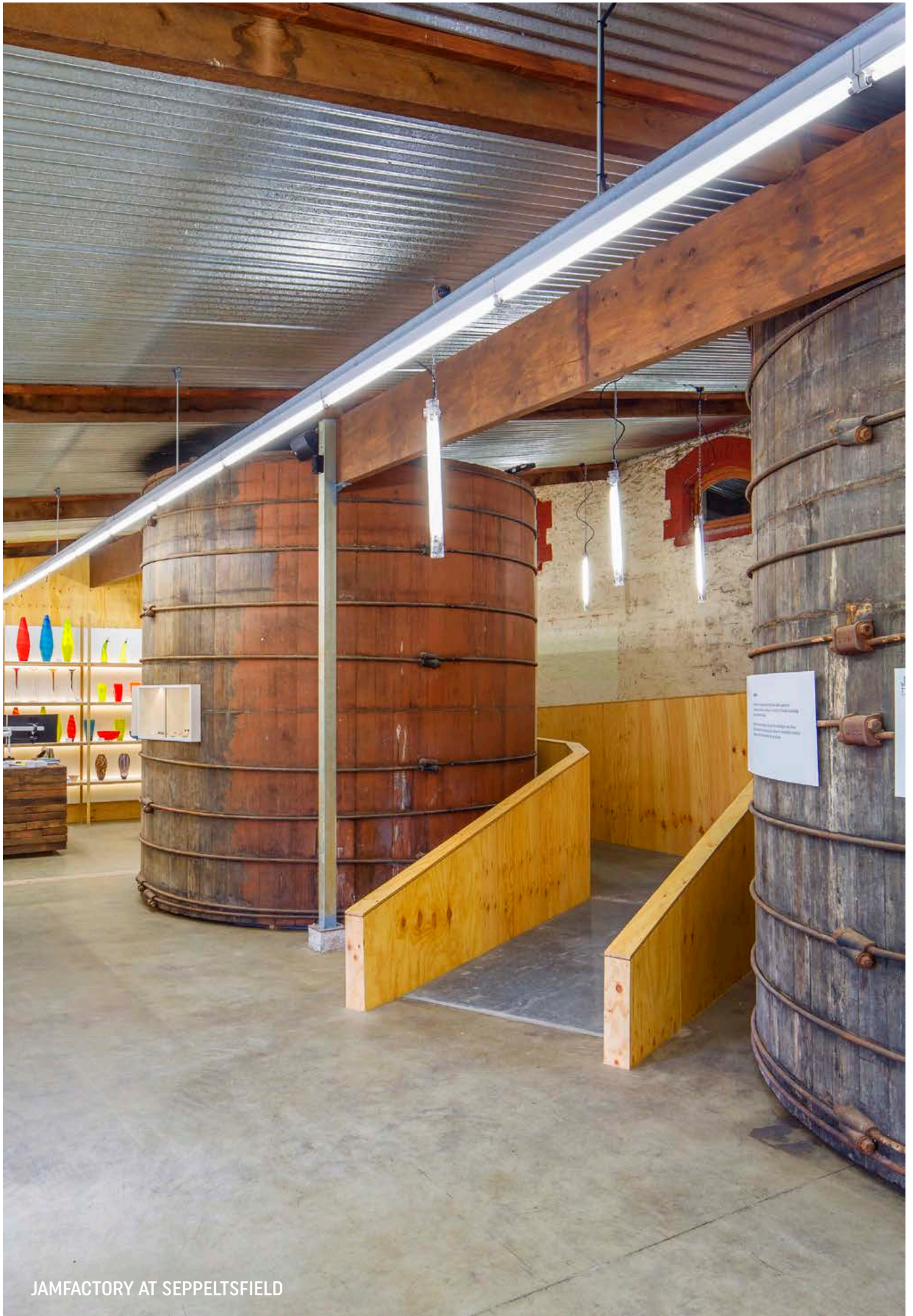
### RESIDENTIAL

- Hotels
- Apartments and townhouses
- Affordable housing
- Student housing
- Bespoke houses
- Alterations and additions
- Condition assessment and refit

### TRANSPORT + INFRASTRUCTURE

- Rail maintenance facilities
- Rail and bus interchanges
- Road corridors
- Bridges
- Light rail infrastructure
- Railway stations





JAMFACTORY AT SEPELTSTFIELD

## 3\_ EXPERIENCE

### ADAPTIVE REUSE

Adaptive re-use and renewal projects which adapt buildings for new functional uses. Design solutions optimise the conservation and retention of key heritage features while creating contemporary spaces which meet client's needs and functional requirements.

### HERITAGE IMPACT STATEMENTS

Heritage Impact Statements include an assessment of the heritage value of a place and an analysis of the impact (physical and visual setting) of proposed works upon the heritage place. Heritage Impact Statements are increasingly requested by Local and State Government planning agencies, where proposed works may have an impact on heritage sites. Our Statements provide an argued, defensible assessment of impact.

### REGIONAL HERITAGE SURVEYS

Preparation of regional heritage surveys, including community consultation, site assessments, mapping and heritage assessments.

### HERITAGE ADVISOR, STATE GOVERNMENT

Provision of advice to government in relation to Development Applications; advice to Council in relation to heritage significance, conservation works, and advice in relation to the adaptive reuse potential of Council owned State Heritage Places.

### HERITAGE ADVISOR, LOCAL GOVERNMENT

Provision of advice in relation to Planning Permits, Local Council heritage policy, planning amendments and strategy, the assessment of potential Local Heritage Places and Heritage Policy Areas, conservation works to Council properties, support and advice for owners of heritage listed properties.

### HERITAGE SURVEYS + ASSESSMENT ADVICE TO GOVERNMENT

Preparation of Heritage DPA's, Planning Scheme HO Amendments and peer review of Heritage Studies and proposed HO Amendments;

Preparation of Heritage Value Assessments for Places nominated to the SA Heritage Places Register, on behalf of DEWNR State Heritage.

### CONSERVATION MANAGEMENT PLANS + DILAPIDATION REPORTS

The assessment of heritage values and the formulation of conservation policy – including the provision of policy for the adaptive-reuse and future development of places. The assessment of the cause of dilapidation and recommendations of repair work, utilising current best-practice conservation methods to maintain heritage values.

### DESIGN + DOCUMENTATION

Detailed documentation of conservation works, adaptive reuse and the design of contemporary architecture which is sensitive to the heritage values of the place and its context.

### URBAN CONSERVATION

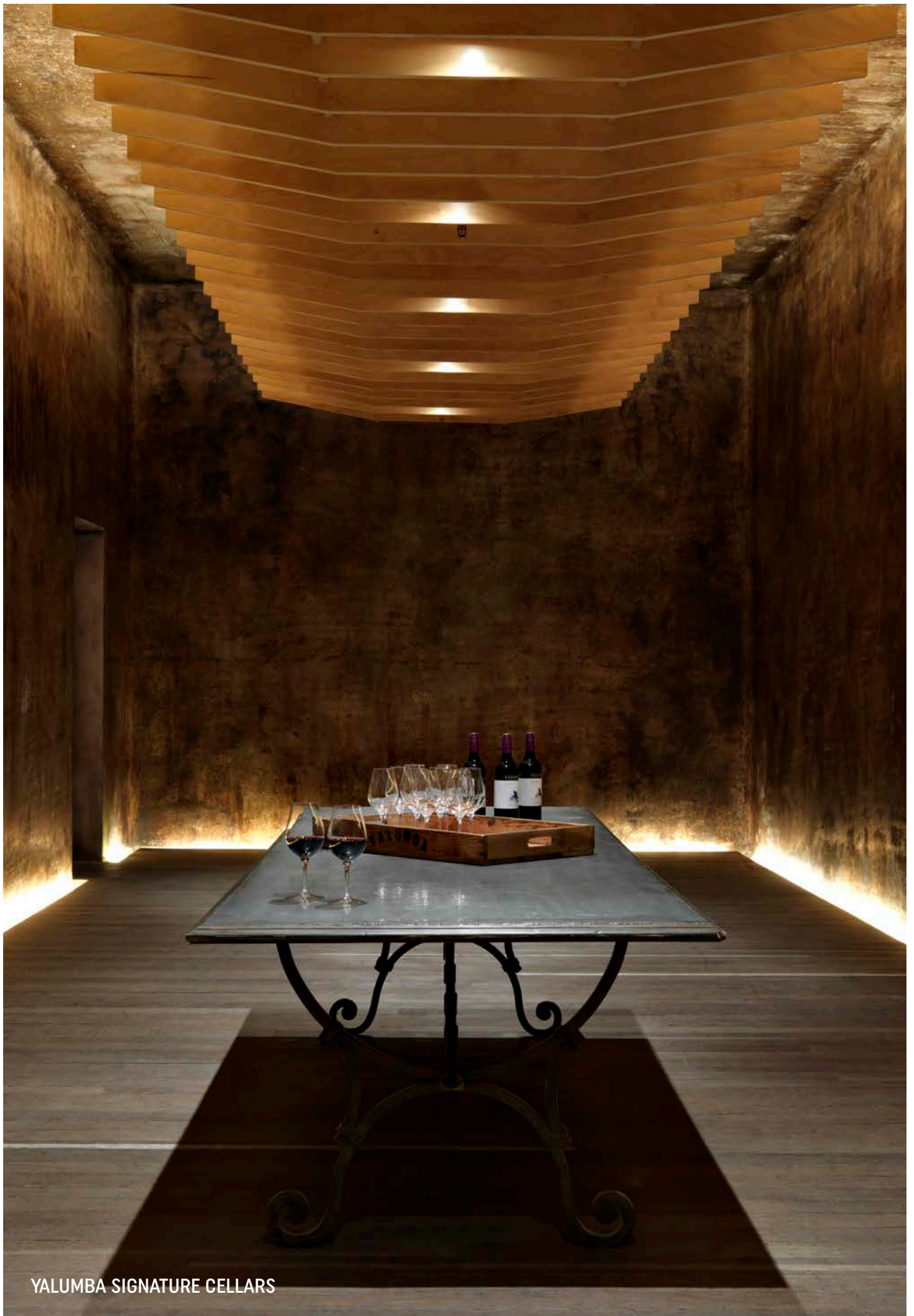
Preparation of design guidelines for future development in designated heritage areas, to maintain heritage values while also providing developmental certainty for future owners and development strategies.

### HERITAGE ADVOCACY

Membership of Australia ICOMOS, APT Australia.

Architect Elizabeth Little is a member of the Executive Committee of Australia ICOMOS.





YALUMBA SIGNATURE CELLARS

## 4\_ SELECTED PROJECTS

---







# HERITAGE ADVISORY SERVICES

GRIEVE  
GILLETT  
ARCHITECTS



**Grieve Gillett Architects has provided formal heritage advice for councils in support of their policy direction for the promotion, conservation and regeneration of the heritage fabric of the region.**

Advice is given in relation to State and Local Heritage listed properties and includes:

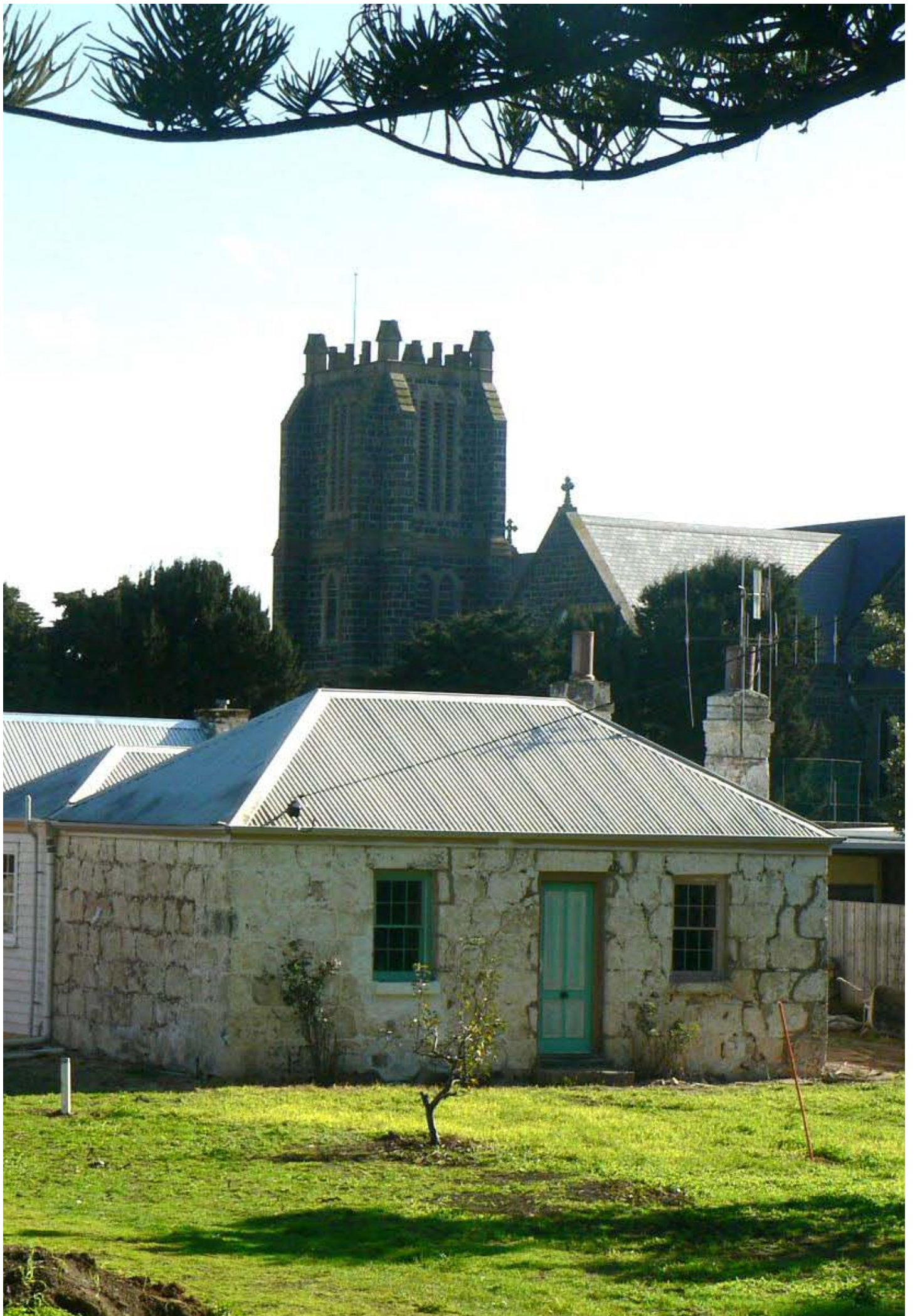
- the provision of advice for development assessment staff
- the provision of advice to local property owners and developers in relation to conservation work and alterations to heritage listed places
- promoting heritage positively, by providing advice to owners of heritage listed properties in relation to funding sources and the benefits and outcomes of heritage management
- assisting councils with the development of heritage policy
- providing advice on the development of conservation and interpretation strategies for heritage sites and the promotion of heritage conservation.

## HERITAGE ADVISORY SERVICES

CURRENT: ADELAIDE HILLS COUNCIL, LIGHT REGIONAL COUNCIL, CITY OF BURNSIDE, CITY OF MITCHAM

PAST: TOWN OF GAWLER, MT BARKER COUNCIL, WAKEFIELD REGIONAL COUNCIL, GOYDER COUNCIL







# HERITAGE ADVISORY SERVICES

GRIEVE  
GILLET  
ARCHITECTS

**Grieve Gillett Architects provides formal heritage advice for both Shires in Victoria, in support of their policy direction for the promotion, conservation and regeneration of the heritage fabric of the region. Heritage areas range from downtown Warrnambool and garden suburbs to rural properties.**

Advice is given in relation to Local Heritage listed properties and Heritage Overlays and includes:

- the provision of advice for planning permit assessment staff
- the provision of advice to local property owners and developers in relation to conservation work and alterations to heritage listed places
- promoting heritage positively, by providing advice to owners of heritage listed properties in relation to funding sources and the benefits and outcomes of heritage management
- assisting Councils with the development of heritage policy
- providing advice on the development of conservation and interpretation strategies for heritage sites and the promotion of heritage conservation.

## HERITAGE ADVISORY SERVICES

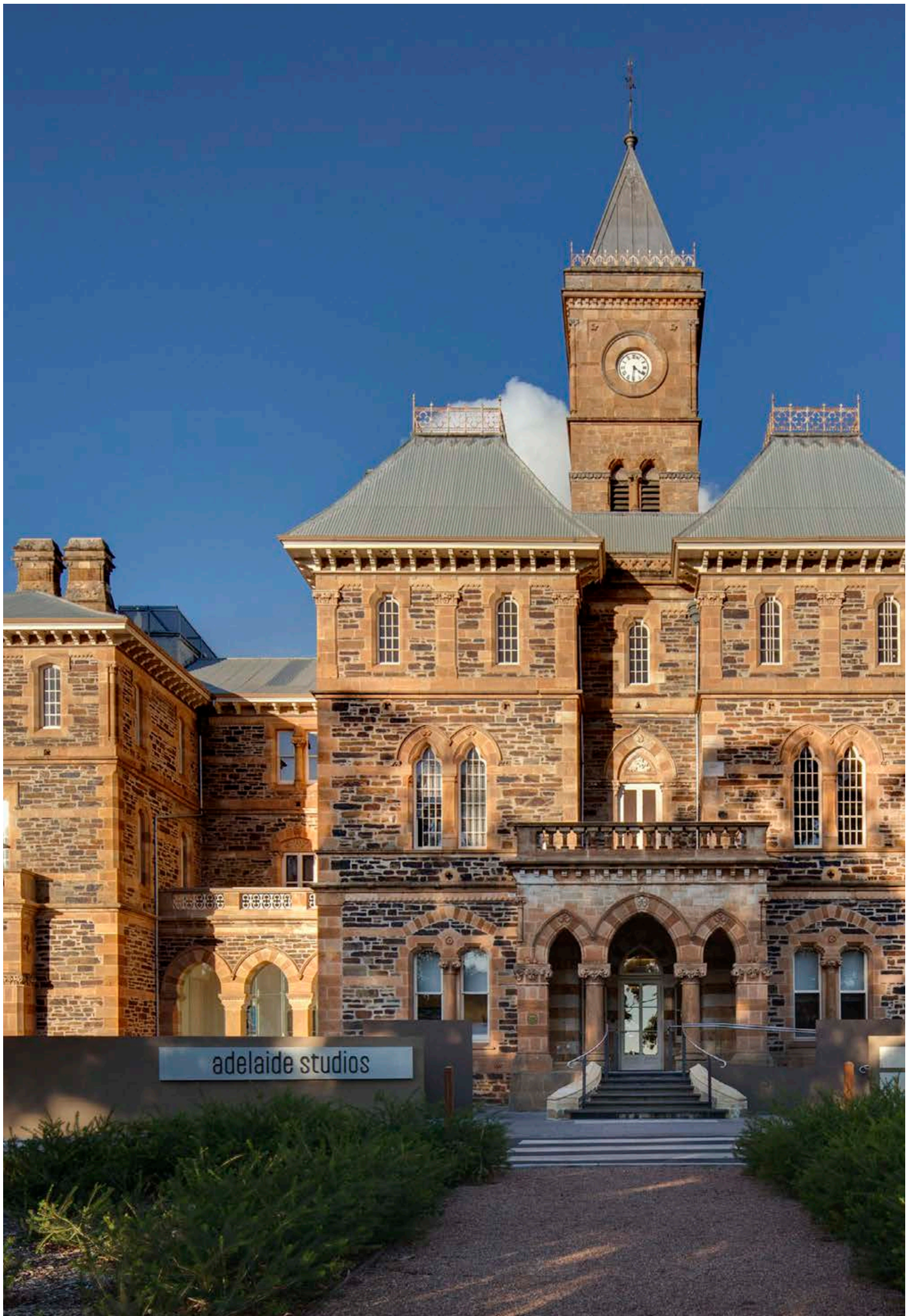
WARRNAMBOOL, VIC  
GUNDITJMARA COUNTRY  
COMPLETED: CURRENT

### CLIENT

WARRNAMBOOL CITY COUNCIL  
& MOYNE SHIRE COUNCIL









# CONSERVATION MANAGEMENT PLANS

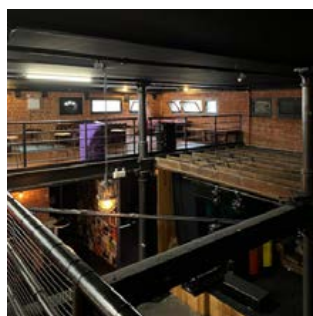
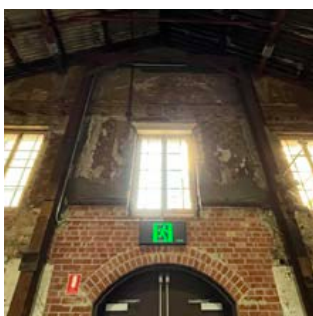
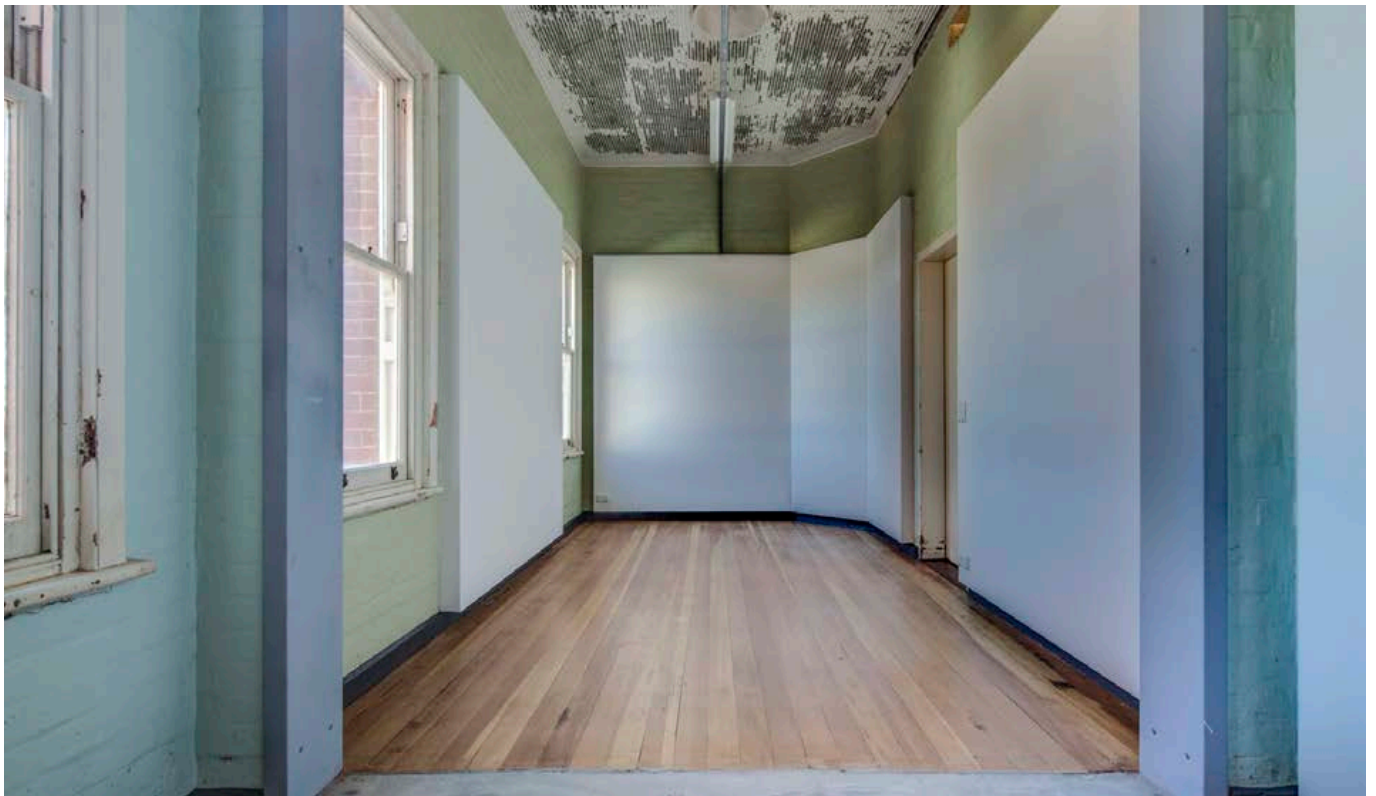
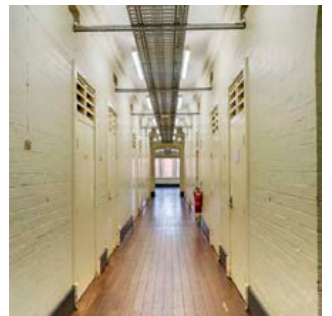
**Conservation Management Plans for heritage places are informed by the principles of The Burra Charter and current Australian conservation policy and practice.**

Each plan includes historical analysis; assessment of heritage value against legislated criteria and thresholds; determination of the condition and relative heritage significance of physical fabric and the preparation of conservation policy for the future maintenance; strategic planning and future developmental certainty of the place.

Each plan is tailored to the specific site, and provides guidance on how to maintain any significant heritage fabric and to upgrade facilities in accordance with statutory requirements, future use options, or user requirements.

Recent Conservation Management Plans include:

- Glenside Cultural Precinct, Glenside
- Port Germein Jetty, Port Germein
- Queens Theatre, Adelaide
- Regal Theatre, Kensington Park
- Waterside Workers Federation Hall, Port Adelaide
- Lobethal Woollen Mill, Lobethal
- Carrick Hill, Springfield
- Adelaide Showgrounds, Wayville
- Wollaston Swing Bridge, Warrnambool
- Lion Arts Factory, Adelaide



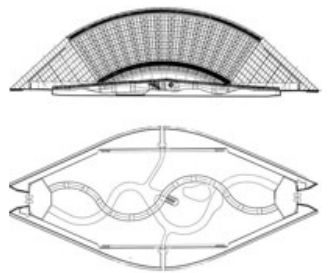






# HERITAGE ASSESSMENTS

GRIEVE  
GILLETT  
ARCHITECTS



**Histories are prepared and the place is assessed against the criteria for heritage value as incorporated in the SA Heritage Places Act. Similar heritage places are considered and the condition of places is recorded. If the place is considered of sufficient heritage value, a Statement of Heritage Value is prepared and these reports are presented to the South Australian Heritage Council, to assist with its decision to enter a place on the SA Heritage Register.**

Grieve Gillett Architects (GGA) has been commissioned to prepare numerous Heritage Assessment Reports for the State Heritage Unit, of the SA Department for Water and Natural Resources. The reports provide a structured assessment of buildings and sites nominated by the public for the State Heritage Register. Selected past Assessment Reports have included:

- Brompton Gasworks (2015) – assessment of the value of all unlisted buildings on the site – as an industrial site of heritage significance
- Taperoo Drill Hall and Barracks (2014) – assessment of heritage value and rarity of Barracks/ Drill Hall buildings – part of SA pre-WW1 mobilisation
- SA Bicentennial Conservatory (2012) – assessment involved consideration of the design quality, innovation and value to the SA community.
- Magill Estate Restaurant (2011) the Keith Cottier designed building was nominated for consideration as a State Heritage Place. GGA assessed heritage value against SA Modernism, the work of Keith Cottier and also the quality of the design solution within a mid 19th century context.

**HERITAGE PLACE  
ASSESSMENTS**  
SOUTH AUSTRALIA  
(2011-PRESENT)

**CLIENT**  
SOUTH AUSTRALIAN  
DEPARTMENT FOR WATER &  
NATURAL RESOURCES (DEWNR)









# HERITAGE DPA REVIEWS



**Grieve Gillett Architects (GGA) has undertaken several Heritage Development Plan Amendment projects for local government, in both South Australia and Victoria. Working as a team, with planners and historians, we have provided independent and expert advice regarding changes to Local Heritage Place schedules and Development Plan heritage related Objectives and Principles of Development Control.**

Heritage DPAs were prepared for councils including Mitcham and the City of Charles Sturt. The Charles Sturt Heritage DPA included the preparation of a thematic history of the region, field survey work to confirm HCA boundaries, identification of potential Local and State Heritage Places and recommendation of changes to Councils Development Plan to better manage heritage values into the future.

Local Heritage DPA Reviews have been undertaken for the City of Adelaide, Marion, Holdfast Bay, Norwood and Mt Barker. GGA has undertaken peer reviews of nominated heritage places, undertaken fieldwork to confirm HCA boundaries and other potential Local Heritage places and presented findings to Council and community forums.

We have also undertaken a 'Part 3B' Heritage Overlay Place review as a part of recent work for the City of Warrnambool. Again, nominated individual places were peer reviewed and assessed against established historic themes and criteria. Boundaries of proposed HO Precincts were also confirmed and Statements of Significance prepared for each Precinct.

GGA has also prepared urban design guidelines for heritage areas, building upon Heritage DPA assessment work. Documents have been prepared illustrating built form, fencing and paint colour guidelines.

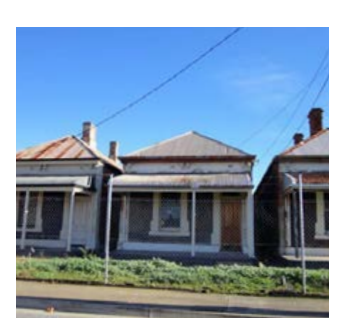
## HERITAGE DEVELOPMENT PLAN AMENDMENTS

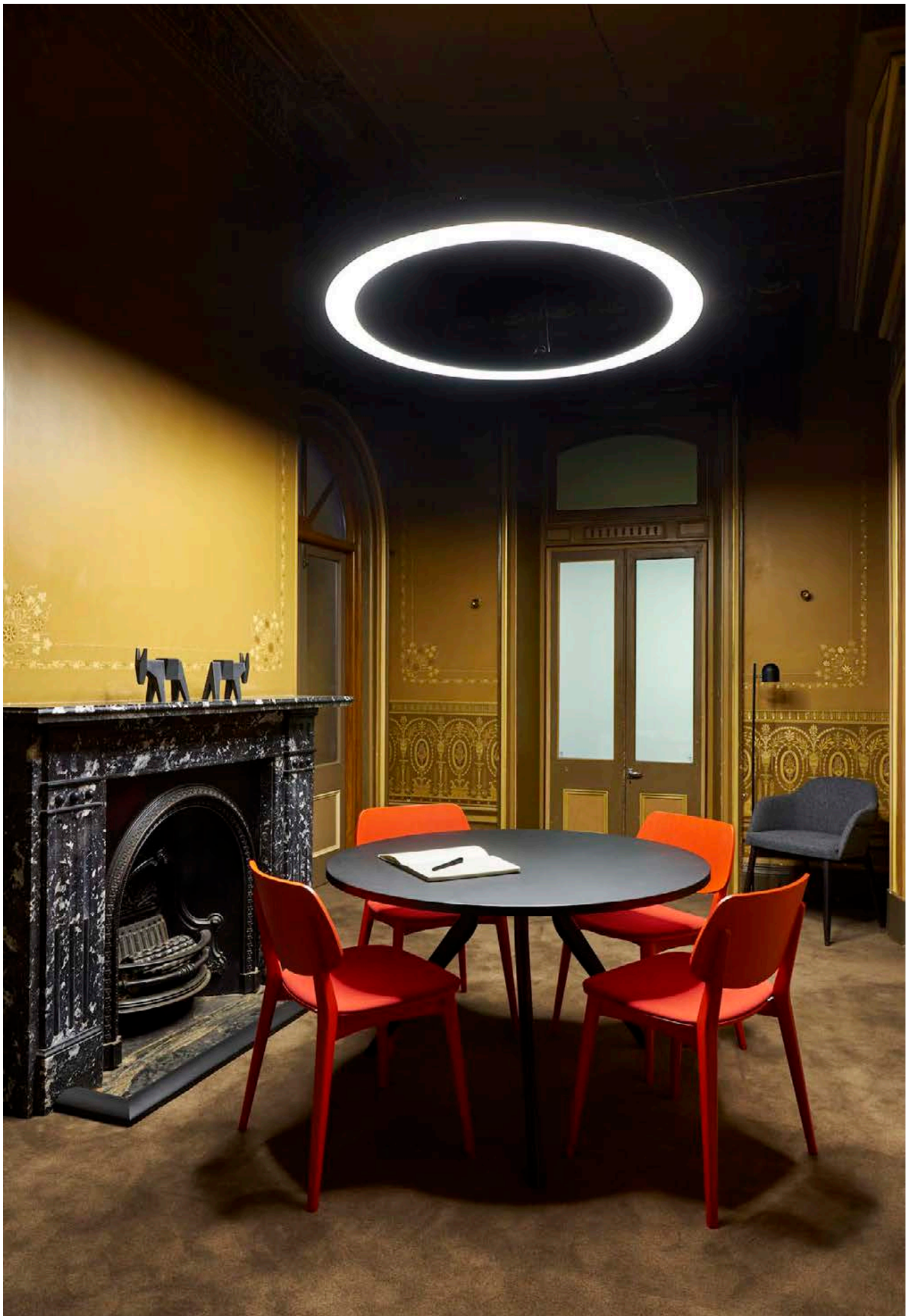
### LOCAL HERITAGE PEER REVIEWS

CITY OF CHARLES STURT, SA  
COMPLETED: 2005 - CURRENT

### CLIENT

ADELAIDE CITY COUNCIL,  
MITCHAM, MARION, HOLDFAST  
BAY, MT BARKER, NORWOOD,  
PAYNEHAM + ST PETERS  
WARRNAMBOOL, MOYNE SHIRE







# LORETO COLLEGE, THE ACACIAS

GRIEVE  
GILLET  
ARCHITECTS



## LORETO COLLEGE NEW STAFF FACILITIES, 'THE ACACIAS'

MARRYATVILLE, SA  
KAURNA COUNTRY  
COMPLETED: 2018

### CLIENT

LORETO COLLEGE

### PROJECT VALUE

\$280,000

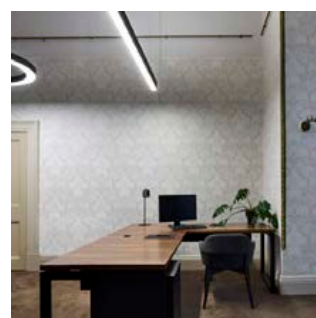
**Grieve Gillett Architects was engaged to deliver two interior projects at Loreto College involving the relocation and consolidation of the administration staff, senior school teaching staff and student entry.**

The iconic State Heritage-listed 'Acacias' building is centrally located within the School and represents a historic way of life for wealthy landholders, who built and added to grand estates on large semi-agricultural properties in South Australia.

The Loreto Convent purchased and converted the grand estate into dormitories and chapel to provide for the spiritual education of the girls. The Acacias remains the symbolic heart of the spiritual life of the college. The interiors, particularly on the ground floor, retains an exceptional level of integrity and intactness demonstrating some of the best preserved and most elaborate early joinery, wallpaper, mouldings, castings, tracings, etchings, and staircases in South Australia.

Grieve Gillett Architects design response was able to complement the highly detailed and rich interior spaces, with a bold contemporary refurbishment that represents the past and present narrative of the School, and has had minimal impact on the heritage values of The Acacias.

The project has reactivated the ground floor rooms, which have been underutilised over many years, by bringing administrative functions into the building. No work was intended to the exterior of the building, with the exception of the provision for a ramp to achieve accessibility to the front door.









# BILL'S HOUSE PEMBROKE SCHOOL

GRIEVE  
GILLET  
ARCHITECTS



**Pembroke School's administration occupies an imposing two storey heritage-listed bluestone building. Previously a prominent private residence of the district, the building is wrapped with a two storey verandah and balcony and preserves many of the original details and cast iron lace work. Pembroke School engaged Grieve Gillett Architects (GGA) to assess the existing façade condition and make recommendations for remedial works prior to repair and repainting.**

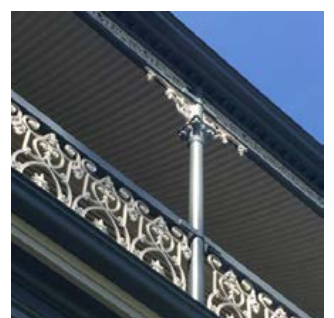
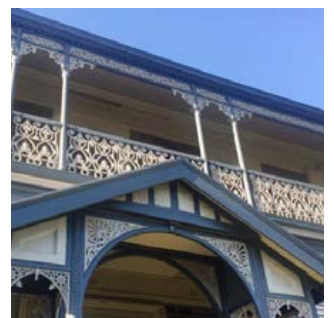
GGA inspected the façade, verandah and balcony structures noting condition and providing a programme of required immediate repairs and recommendations for ongoing maintenance and short to medium term remedial works. Substrate conditions were assessed and recommendation made regarding paint system specification and surface preparation. GGA also took the opportunity to suggest a new external colour scheme. A series of colour schemes were developed that provided a fresh approach to the building's architectural features while respecting the buildings heritage within the wider campus context.

GGA coordinated and managed the Development Application process through Council responding to queries raised. GGA worked with the painting contractor confirming adequacy of surface preparations and clarifying colours and detailing to achieve a subtle but exception outcome.

## **BILL'S HOUSE PEMBROKE SCHOOL**

KENSINGTON, SA  
KAURNA COUNTRY  
COMPLETED: 2017

**CLIENT**  
PEMBROKE SCHOOL



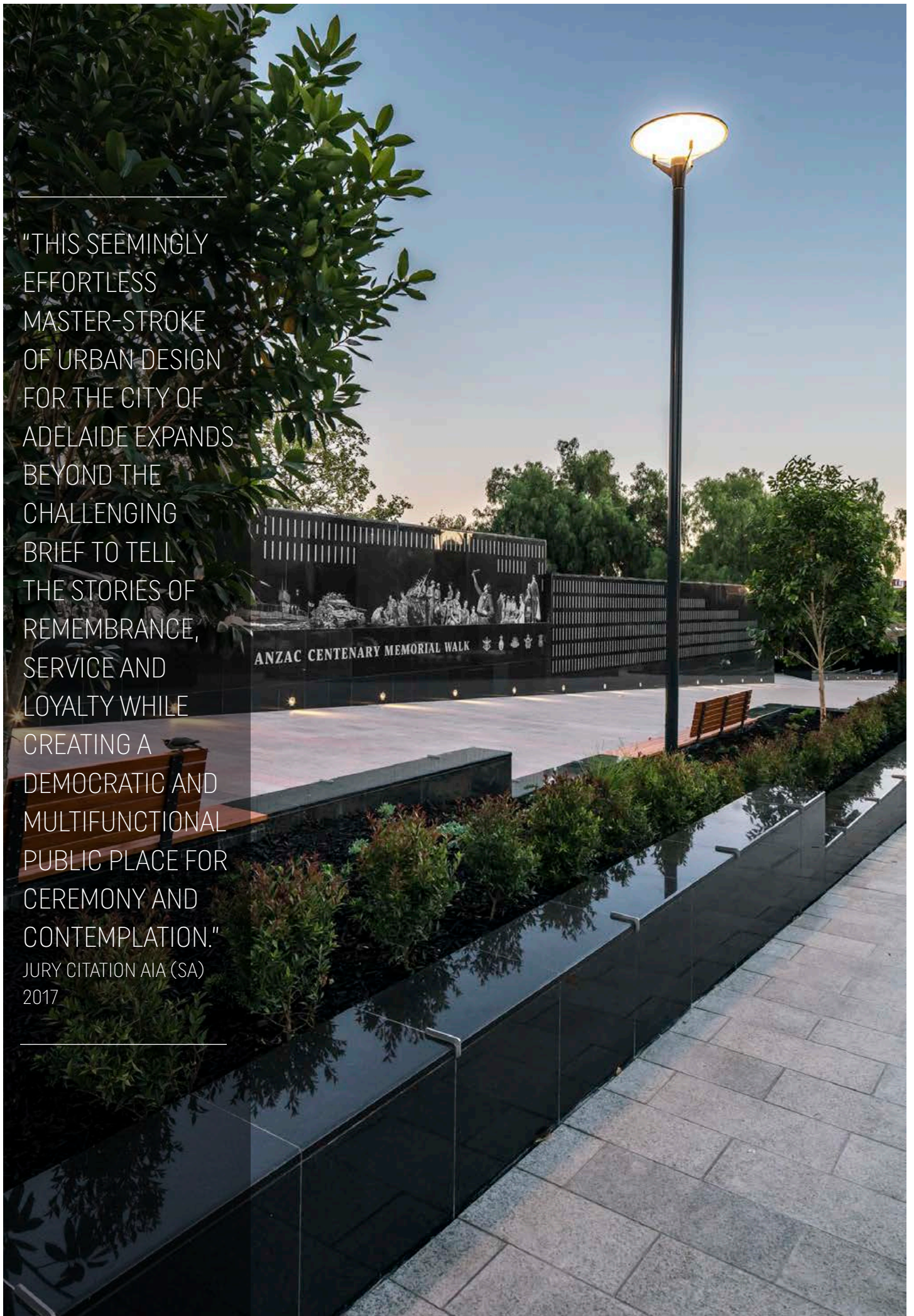


---

"THIS SEEMINGLY  
EFFORTLESS  
MASTER-STROKE  
OF URBAN DESIGN  
FOR THE CITY OF  
ADELAIDE EXPANDS  
BEYOND THE  
CHALLENGING  
BRIEF TO TELL  
THE STORIES OF  
REMEMBRANCE,  
SERVICE AND  
LOYALTY WHILE  
CREATING A  
DEMOCRATIC AND  
MULTIFUNCTIONAL  
PUBLIC PLACE FOR  
CEREMONY AND  
CONTEMPLATION."

JURY CITATION AIA (SA)  
2017

---





# ANZAC CENTENARY MEMORIAL WALK

GRIEVE  
GILLET  
ARCHITECTS

**The Anzac Centenary Memorial Walk is a 'memorial for all, not a few'. The project sought to deliver a memorial space within an urban environment that is simple, elegant and reflective. The Walk links the South Australian National War Memorial with the Torrens Parade Ground and Government House.**

The Walk incorporates a series of open blade fence, opening up views to Government House while simultaneously providing privacy. A reflective granite wall with etchings reflecting 100 years of Australians at war encourage reflection and continuing engagement of the Anzac Legacy. A linear garden populated with Australian natives provide a space for quiet contemplation removed from the city surrounds. Public and interactive lighting enhances night time experience. A generous promenade provides a safe and accessible public space and a link that is welcoming and age-friendly, large enough to accommodate everyday flow without losing its sense of place.

Working within and extremely tight timeframe, Grieve Gillett Architects was able to encapsulate the client's aspirations, manage stakeholder consultation and budgetary requirements to deliver a Memorial that is seamlessly integrated within its urban settings. The project has transformed Kintore Avenue into a memorial precinct that pays tribute to the service and sacrifice of all Australians affected by war. The site now encourages public interaction with Government House and opens up Kintore Avenue as an important piece of public infrastructure connecting Adelaide City with the North Terrace and Riverbank Precincts.

**A MEMORIAL SPACE WITHIN AN URBAN ENVIRONMENT THAT'S SIMPLE, ELEGANT AND REFLECTIVE**

ADELAIDE, SA  
KAURNA COUNTRY  
COMPLETED: 2016

#### CLIENT

DEPARTMENT FOR INFRASTRUCTURE AND TRANSPORT, DEPARTMENT OF VETERANS AFFAIRS

#### PROJECT VALUE

\$10M

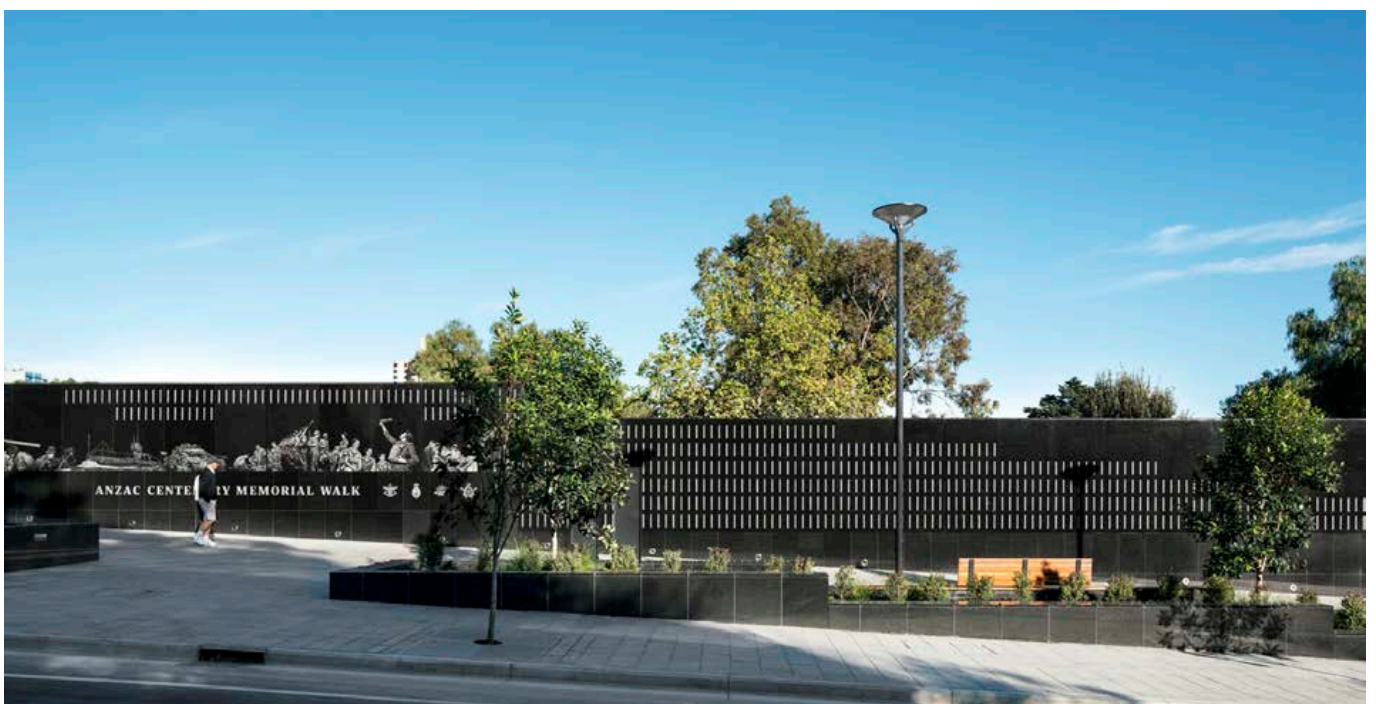
#### AWARDS

2017 AIA (SA) THE GAVIN WALKLEY AWARD FOR URBAN DESIGN

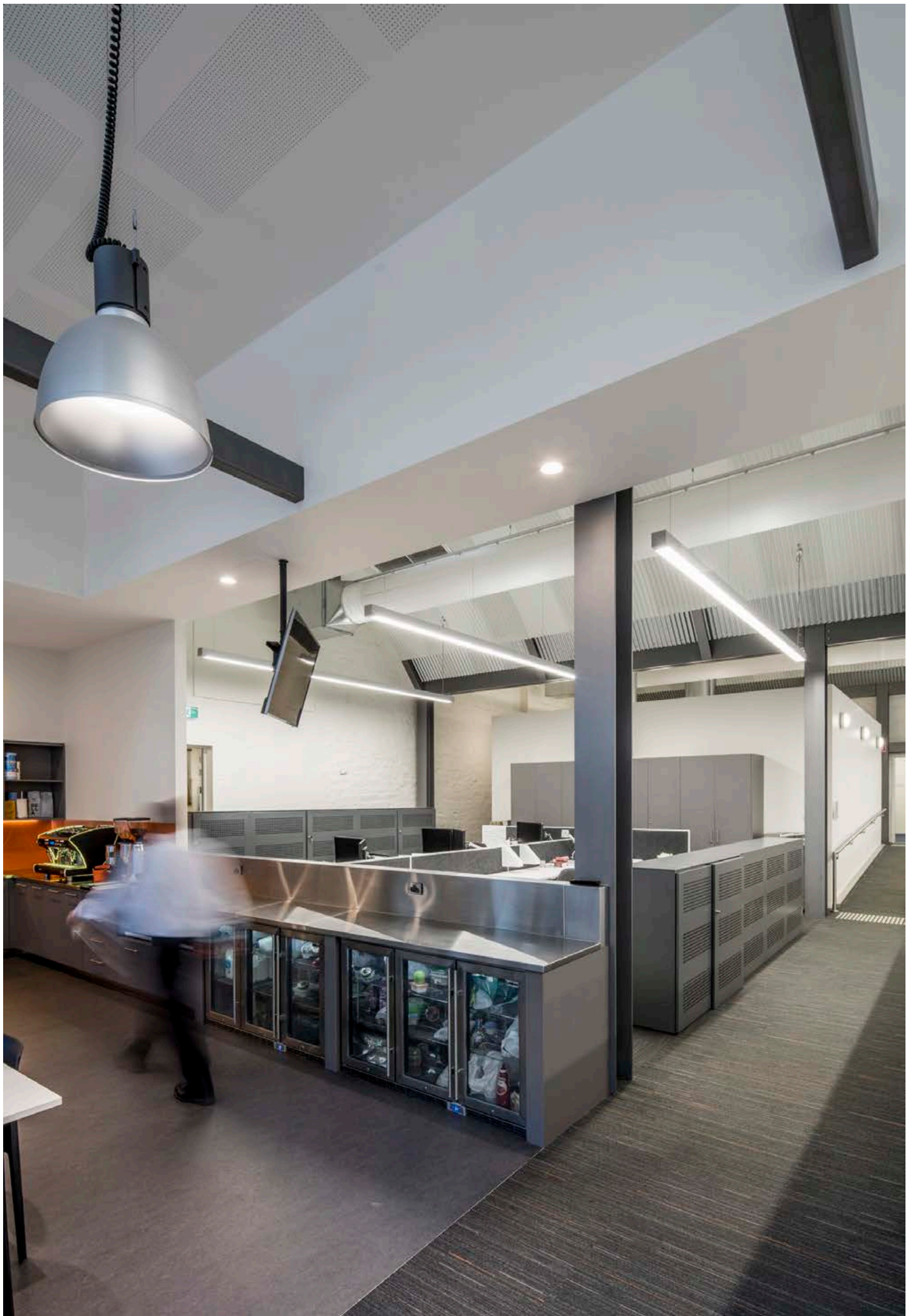
2017 AIA (SA) CITY OF ADELAIDE PRIZE

2017 AIA (SA) CITY OF ADELAIDE PEOPLE'S CHOICE AWARD

2016 AUSTRALIAN CIVIC TRUST COLONEL WILLIAM LIGHT AWARD FOR EXCELLENCE IN DESIGN

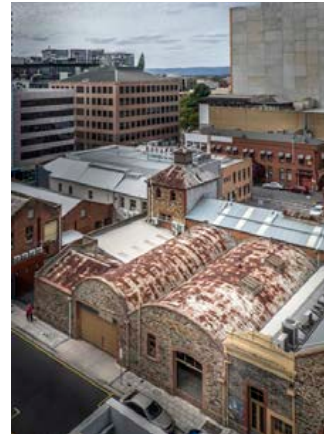






# WALLBRIDGE GILBERT AZTEC OFFICE REDEVELOPMENT

GRIEVE  
GILLET  
ARCHITECTS



## WALLBRIDGE GILBERT AZTEC ENGINEERS OFFICE REDEVELOPMENT

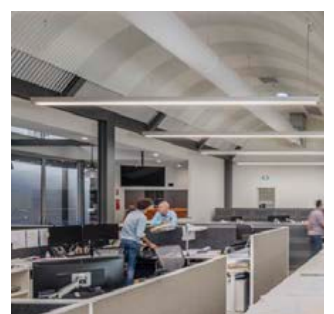
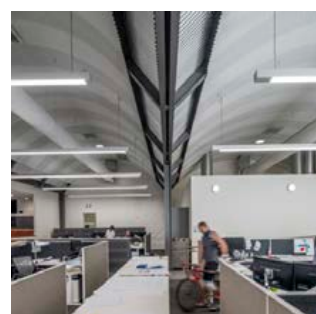
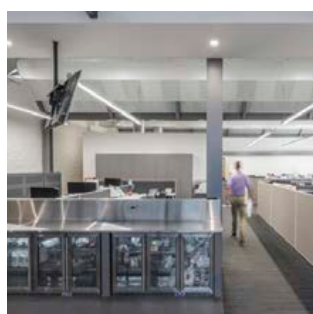
ADELAIDE, SA  
KAURNA PEOPLE  
COMPLETED: 2016

**PROJECT VALUE**  
\$8.5MILLION

**The weathervane at the top of the tower reveals one of the former uses of this iconic heritage building in Adelaide. Formerly a brewery, mechanic's workshop and leaking car park, it is now an extension to the offices of longstanding Adelaide engineering practice, Wallbridge and Gilbert.**

A respect for the history of the place and the way that history is bound in the fabric of the building, steered the design of a significant intervention to convert a leaking, drafty and crooked space beneath the two barrel roofs, into a useable and unique office environment. Based on best practice heritage principles, but also on a design premise that sought to use the patina of worn materials in the new work, the conflict between retention of old physical fabric and provision of new useable space has led to a design solution that elegantly references what came before.

The collaboration between architect, engineer, contractor, steel fabricator, and 3D modeller results in a deceptively simple interior space. Externally, works focussed on providing stability to the weathered façade, reinstating details where appropriate and removing later insertions to return the worn Wyatt Street façade, to a state of physical soundness without over embellishing.



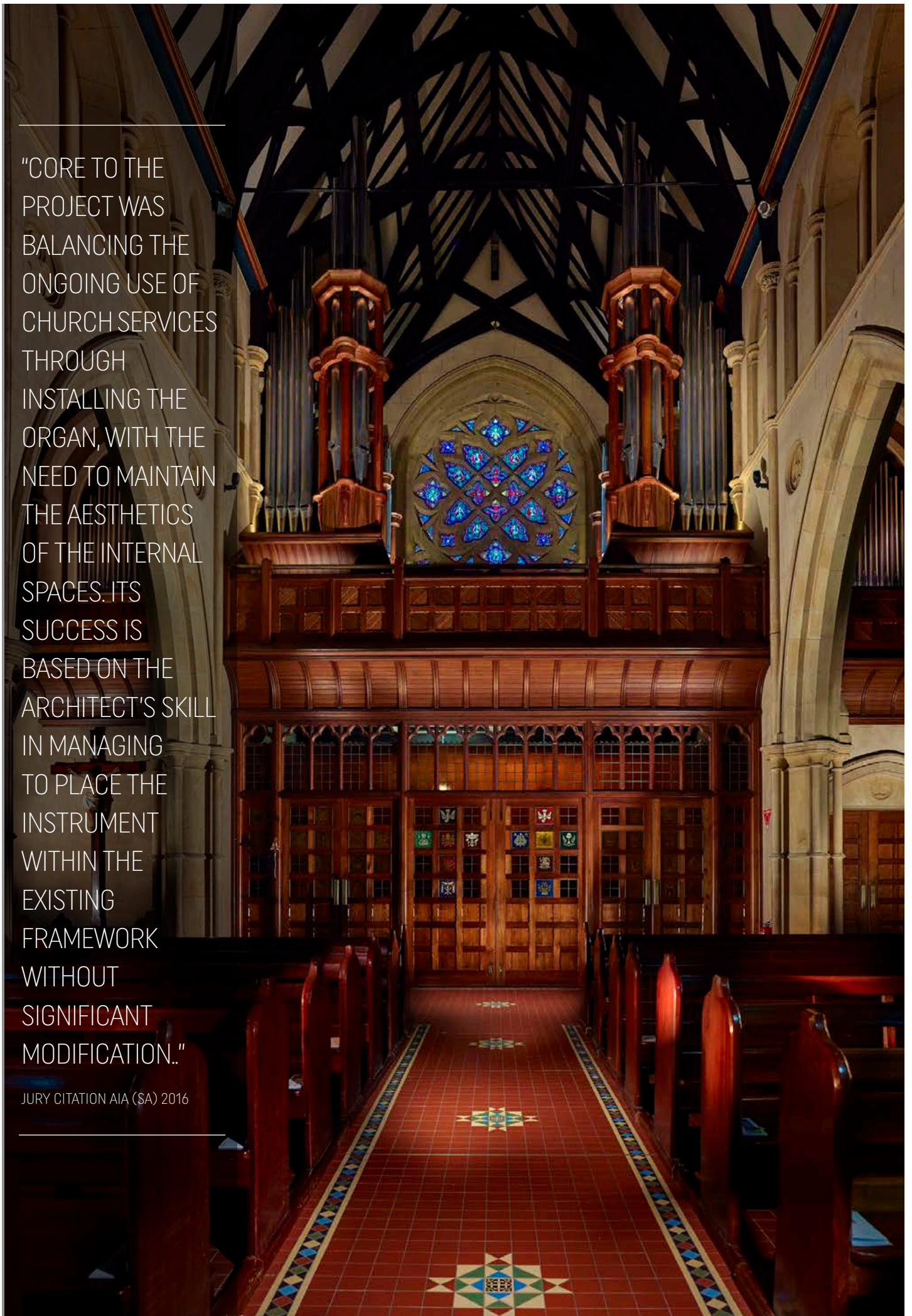


---

"CORE TO THE PROJECT WAS BALANCING THE ONGOING USE OF CHURCH SERVICES THROUGH INSTALLING THE ORGAN, WITH THE NEED TO MAINTAIN THE AESTHETICS OF THE INTERNAL SPACES. ITS SUCCESS IS BASED ON THE ARCHITECT'S SKILL IN MANAGING TO PLACE THE INSTRUMENT WITHIN THE EXISTING FRAMEWORK WITHOUT SIGNIFICANT MODIFICATION.."

JURY CITATION AIA (SA) 2016

---





# SAINT FRANCIS XAVIER CATHEDRAL PIPE ORGAN

GRIEVE  
GILLET  
ARCHITECTS



**Over 10 years ago the Catholic Archdiocese purchased an historic pipe organ that originally came from a church in Quebec. The organ, manufactured by renowned Canadian company Freres Casavant, is currently being restored by specialists in Melbourne and work to install it onto the gallery of the St. Francis Xavier Cathedral will begin in July 2015.**

Grieve Gillett Architects (GGA) designed new decorative timber casework to hold the organ pipes and conceal the workings of the organ. Working with Hansen Yuncken, GGA coordinated the works and the fabrication and installation of the casework. GGA liaised closely with the State Heritage Unit and Adelaide City Council to minimise the impact of the new works on the significant historic fabric of the cathedral and used 3D CAD modelling, in conjunction with digital data from cloud point surveys, in order to accurately establish the final location of the organ apparatus and the proposed appearance of the casework.

In designing the pipe organ casework GGA referenced the existing masonry column features and gallery edge woodwork to develop in timber a rigorous and sensitive interpretation of the historic fabric of the cathedral. The resultant designs were built to the requisite high standards of craftsmanship in keeping with the gothic tradition of the historic building.

## **SAINT FRANCIS XAVIER CATHEDRAL PIPE ORGAN**

ADELAIDE, SA  
KAURNA COUNTRY  
COMPLETED: 2015

### **CLIENT**

THE CATHOLIC ARCHDIOCESE  
OF ADELAIDE

### **AWARDS**

AIA 2016 (SA) COMMENDATION  
FOR HERITAGE





# NORTH ADELAIDE RAILWAY STATION

GRIEVE  
GILLET  
ARCHITECTS



**The North Adelaide Railway Station is a State Heritage Place and whilst no longer in use as a passenger station, the platform remains accessible to train passengers. The Station Building itself has been adapted into a café and store.**

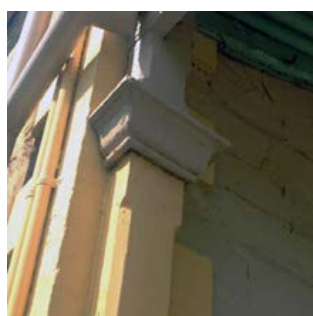
Grieve Gillett Architects were engaged by the Adelaide City Council to investigate and document conservation and repair works to the platform side verandah elements including roof, verandah posts, timber decorative elements, and considering also the removal of redundant services.

We prepared documentation sufficient for contractor input into methodology and pricing, and also incorporated engineering commentary as to the proposed post base repairs, cognisant of retaining as much original fabric as possible.

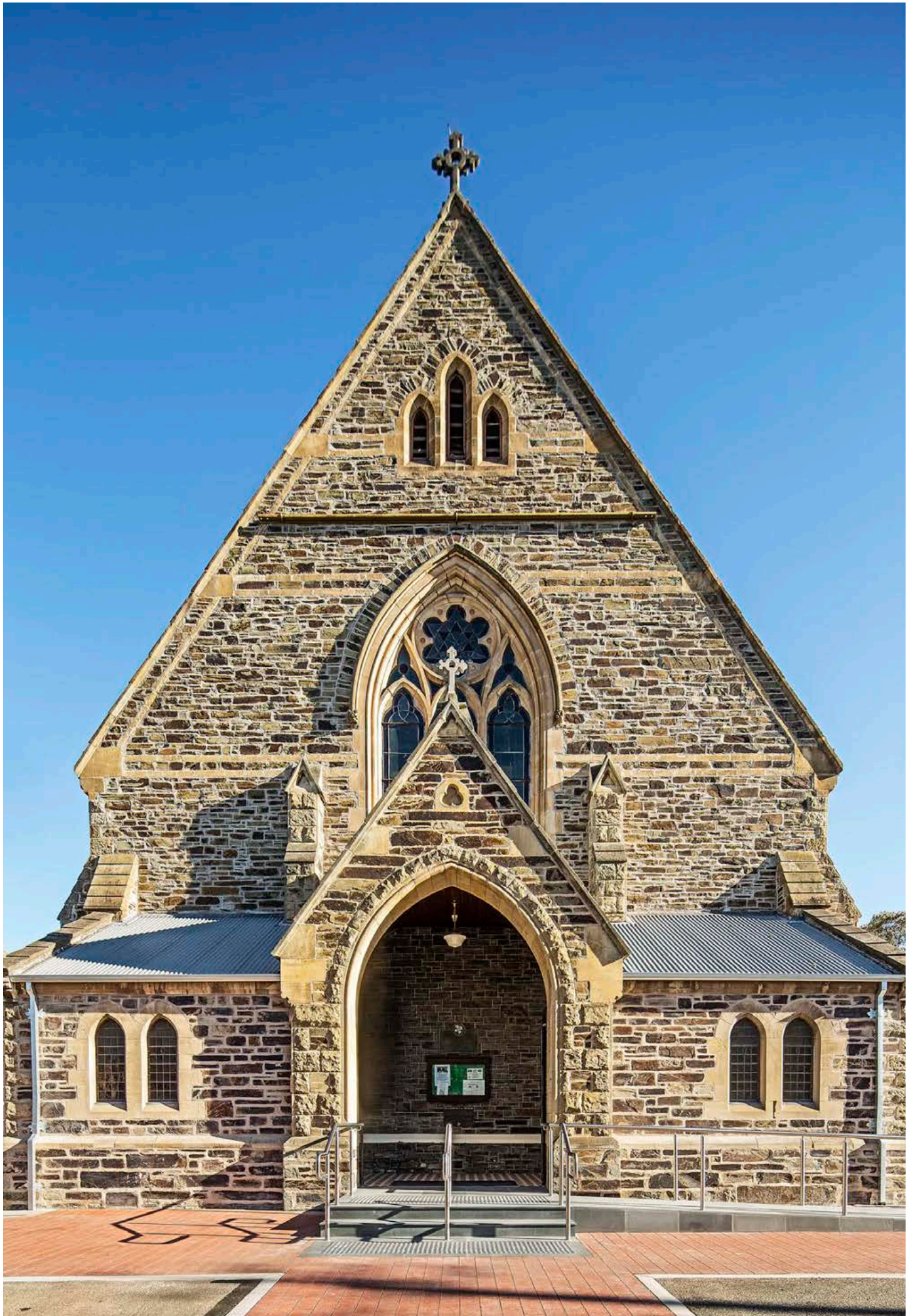
**NORTH ADELAIDE RAILWAY  
STATION CONSERVATION  
WORKS DOCUMENTATION**  
NORTH ADELAIDE, SA  
KAURNA COUNTRY  
COMPLETED: 2015

**CLIENT**  
CITY OF ADELAIDE

IMAGE ABOVE: STATE LIBRARY  
OF SOUTH AUSTRALIA [B 3903]

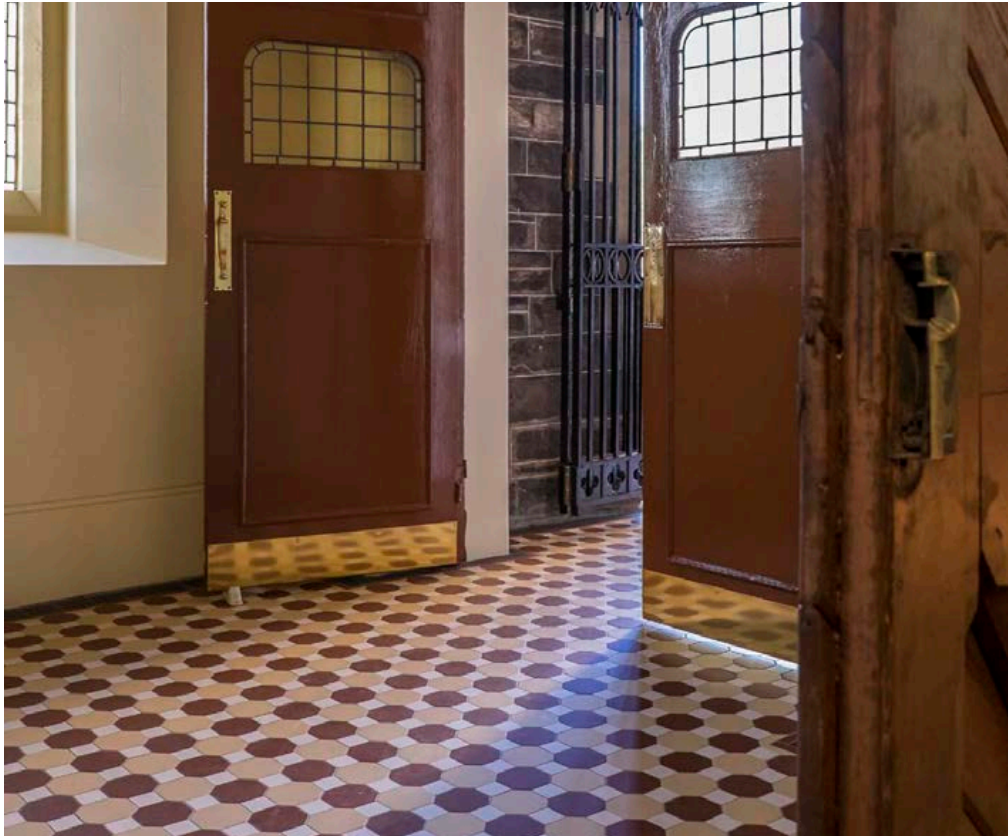








# ST LAURENCE'S CHURCH



## ST LAURENCE'S CHURCH

NORTH ADELAIDE, SA  
KAURNA COUNTRY  
COMPLETED: 2014

### CLIENT

DOMINICAN FATHERS

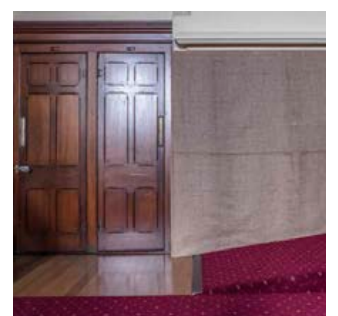
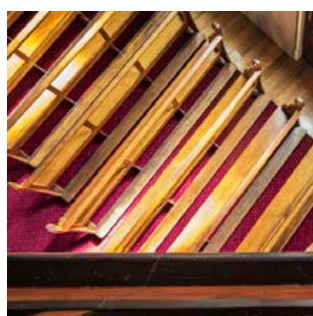
### PROJECT VALUE

\$493,000

**Dedicated in 1869, St Laurence's Church in North Adelaide is a State Heritage place with a long history of remedial works that failed to address both movement and rising damp in the building's fabric.**

To eradicate damp and stabilise the external walls, Grieve Gillett Architects oversaw removal of the existing poor quality concrete floor slab in the nave and the casting of a new damp proof slab that includes innovative perimeter ventilation ducts. At the same time, external low-level cement pointing was replaced with lime mortar and internal cement render was removed. To finish, new timber flooring and carpet were laid throughout the nave and was fully repainted.

To further assist in reducing external salt damp, outside ground levels were reduced and new salt-free gravel laid. Rainwater heads, gutters and downpipes were replaced in heritage galvanized steel to match the form and detail of the original 1869 roofing fixtures. Disability access was provided outside by a slate-paved entrance ramp set into a brick paved forecourt and new tessellated tiling now decorates the entrance porch.







# GOODMAN BUILDING

**The State Heritage listed Goodman Building was constructed in 1909 as the Administration Building for Adelaide's Municipal Tramways Trust. It now houses office and administrative functions for the Adelaide Botanic Gardens.**

The building is an imposing landmark on Hackney Road and is of architectural significance as a fine example of Edwardian architecture with Arts and Crafts influences. The three storey building features high quality brickwork, rendered detailing and slate roofing with terracotta capping tiles.

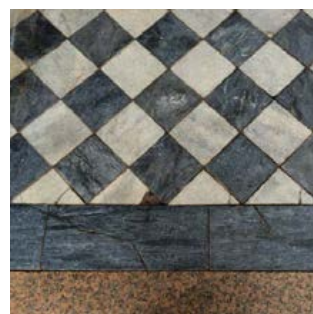
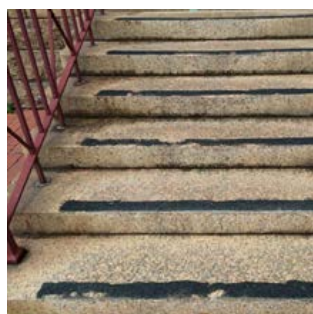
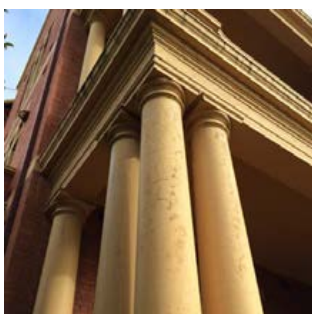
The project involved the review and updating of the 2011 Dilapidation Report, and production of documentation and specification to describe the required repair and restoration works, including reroofing, repointing, timber repairs and repainting. The documents have been prepared specifically to utilise the available budget for each stage of works as best as possible, ensuring scaffold efficiency is maximised and maintaining occupant access throughout the staged works.

**DILAPIDATION SURVEY & DOCUMENTATION**

ADELAIDE, SA  
KAURNA COUNTRY  
COMPLETED: 2014

**CLIENT**

SPOTLESS & ADELAIDE  
BOTANIC GARDENS







# MOUNT LOFTY OBELISK



**Grieve Gillett Architects (GGA) was engaged by the Department for Environment, Water and Natural Resources (DEWNR) through Spotless Property Management to scope renovation works to the Obelisk at the Mount Lofty Summit (built in 1885).**

GGA was responsible for producing a scope of works and specification for the paint removal and repainting of the Obelisk. The structure had undergone various alterations over its life including being used as an aircraft beacon during World War Two and had survived the destructive 1983 Ash Wednesday bushfires.

The stone masonry Obelisk had been repaired and repainted multiple times but with limited success and longevity. Spotless and DEWNR required a comprehensive approach to repair and repainting to ensure durability and longevity of the structure and the coating system. As part of the scope, testing of the existing system was undertaken, and specific attention given to management of lead paint.

## **MOUNT LOFTY OBELISK**

MOUNT LOFTY, SA  
KAURNA COUNTRY  
COMPLETED: 2014

## **CLIENT**

SPOTLESS / DEPARTMENT FOR  
ENVIRONMENT, WATER AND  
NATURAL RESOURCES

## **AWARDS**

2016 AUSTRALIAN CIVIC TRUST  
AWARDS, HERITAGE AWARD





---

THE DESIGN  
PROVIDES  
A CLEAR  
DELINEATION  
BETWEEN OLD  
AND NEW. ALL  
EXISTING WALLS  
RETAIN THEIR  
STORIES, WHILE  
NEW INSERTIONS  
PROVIDE A STARK  
CONTRAST IN  
COLOUR AND  
MATERIAL.

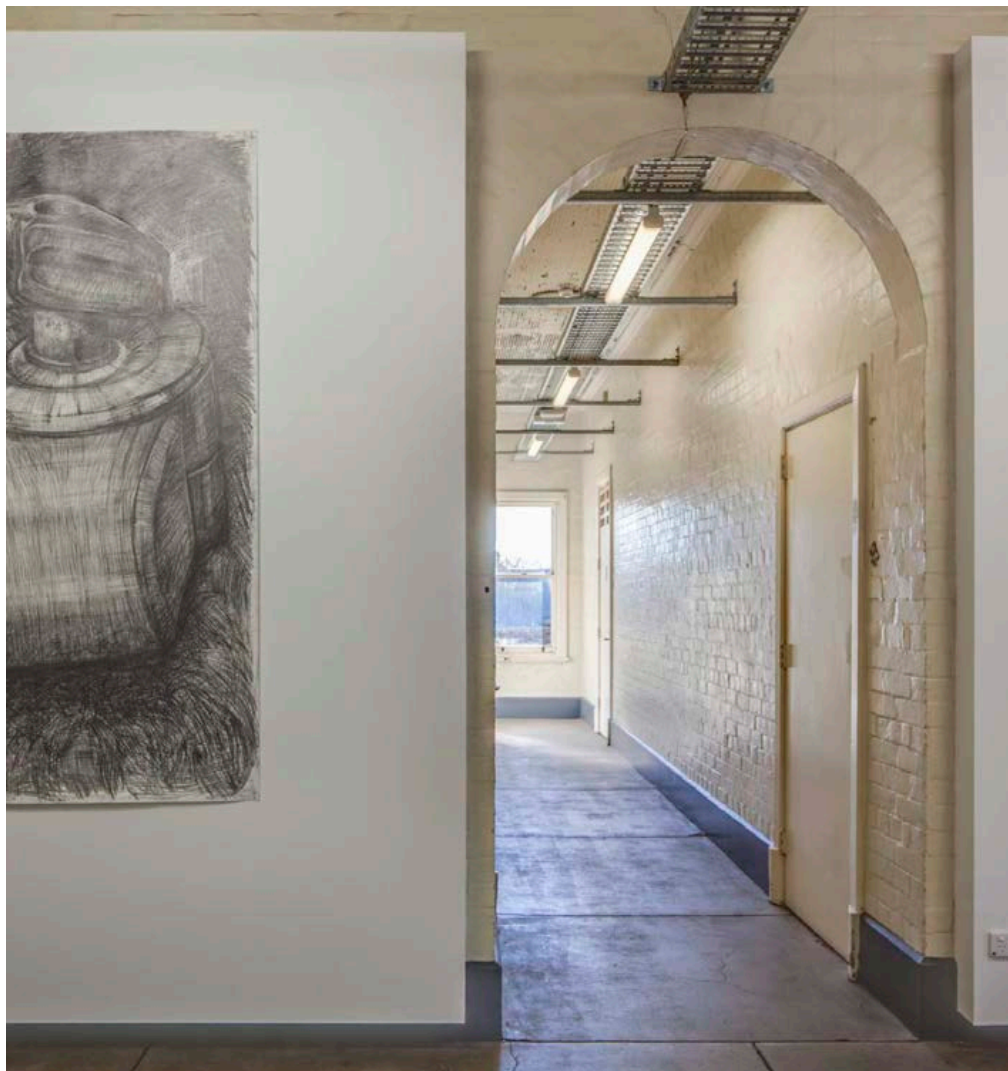
---





# ADELAIDE CENTRAL SCHOOL OF ART

GRIEVE  
GILLET  
ARCHITECTS



## ADELAIDE CENTRAL SCHOOL OF ART

ADELAIDE SA  
KAURNA COUNTRY  
COMPLETED: 2013

### CLIENT

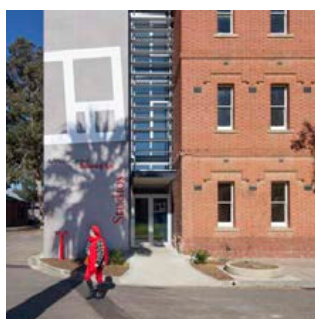
ADELAIDE CENTRAL SCHOOL  
OF ART

### PROJECT VALUE

\$2.8 MILLION

### AWARDS

AIA (SA) 2014  
AWARD FOR HERITAGE



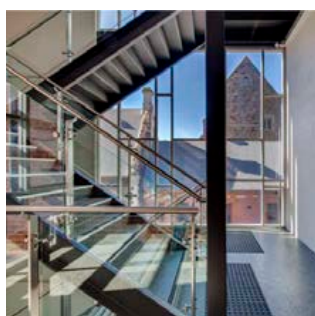
**Grieve Gillett Architects has worked with the Adelaide Central School of Art over a number of years, assisting with the identification of buildings appropriate to acquire and renovate for the School's relocation.**

The circa 1899 buildings in which the School now resides were previously the Male Dormitory and Dining Hall for the Glenside Lunatic Asylum, both unoccupied since 1978. The buildings lend themselves perfectly to an art school, with the large dormitories now teaching studios and smaller 'cells' individual studio spaces. The Dining Hall building has been converted into administration facilities and an art gallery.

The design intent was to provide a clear delineation between old and new. All existing walls were simply cleaned, retaining their stories, while new insertions provide a stark contrast in colour and material.

Services have generally been left exposed. This decision was partly driven by a constrained budget, and with a view to maximising flexibility in the future for the School. Grieve Gillett Architects assessed code compliance in a comprehensive review and report prior to design work commencing.

The School believes that the iconic buildings and prestigious location has drawn new support for the school from business, other education institutions and the community.







# HENLEY TOWN HALL

GRIEVE  
GILLET  
ARCHITECTS



## HENLEY TOWN HALL

HENLEY BEACH, SA  
KAURNA COUNTRY  
COMPLETED: 2013

## CLIENT

CITY OF CHARLES STURT

**This project involved the documentation and writing of a specification for repointing of the 1921 State Heritage Listed Henley Town Hall. The building's face brickwork was suffering extensive decay after years of inappropriate repairs and as a result of its location on the seafront.**

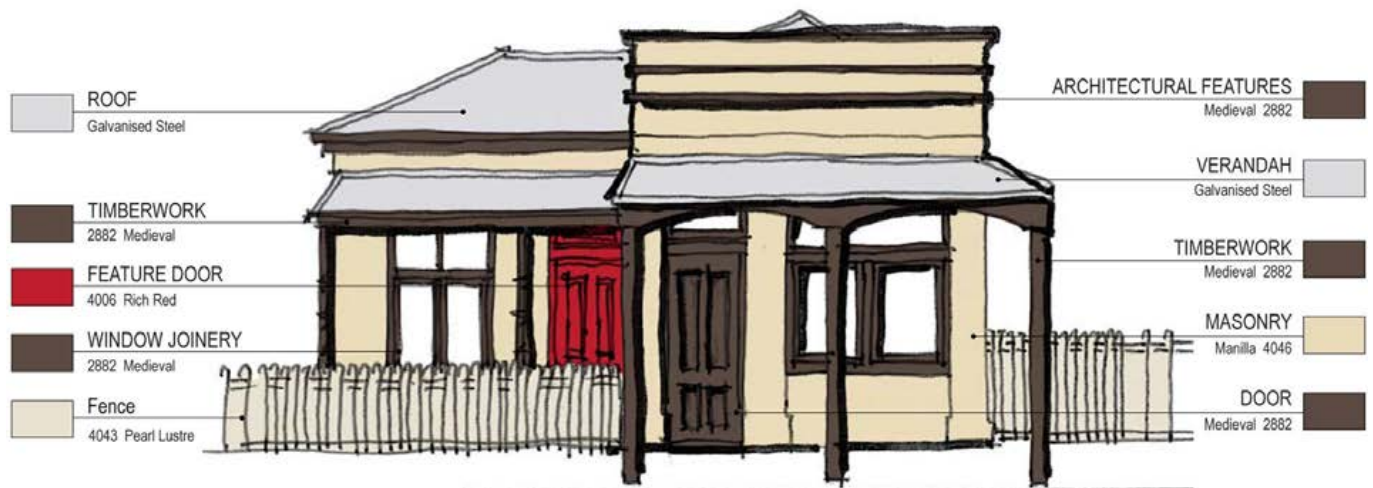
The repointing specification provided for a lime based mortar to be used, and included works to repair concrete lintels, repair timber window frames, and reglaze windows.







# PAINTING GUIDELINES



Port Fairy, Victoria was established during the 1840s and still retains a substantial number of buildings from the 19th Century remaining, resulting in a town of high historic integrity. As part of their on-going Heritage Advisory Service, Grieve Gillett Architects was commissioned to prepare exterior painting guidelines for heritage buildings through the town.

The guidelines illustrate the decorative possibilities for the exterior of 19th Century heritage buildings and provide building owners with a historically appropriate palette of colours. Several colour combinations were shown, all of which focus on decorative approaches common to the era of the historic town.

The resulting painting guidelines provide a valuable resource for property owners, allowing them to visualise a mix of period specific colour schemes. Council planning assessment staff also use the guidelines to assist in the assessment of Planning Permits, saving time for applicants.

## PORT FAIRY PAINTING GUIDELINES

PORT FAIRY, VIC  
GUNDITJARA COUNTRY  
COMPLETED: 2013

## CLIENT

MOYNE SHIRE COUNCIL



"... THE NEW  
FACILITIES  
ACHIEVE  
INDUSTRY BEST  
PRACTICE.  
BOTH THE  
OLD AND NEW  
ARCHITECTURE  
HAVE A ROBUST,  
NO-NONSENSE  
CHARACTER,  
RESULTING IN AN  
EXPERIENTIALLY  
RICH AND  
STIMULATING  
ENVIRONMENT."

JURY CITATION AIA (NATIONAL)  
2012

adelaide studios

south australian film corporation



# ADELAIDE STUDIOS

**The new Adelaide Studios, located within the Glenside Campus cultural precinct, provides a landmark home for the next generation of film and screen talent.**

The Studios include new sound stages, production rooms, post-production facilities including mixing and foley studios, a set construction building and a screening theatre. These facilities will sustain South Australia's niche in supporting and attracting independent production.

Site master planning includes the successful integration of new buildings with the existing heritage buildings and features and access for large articulated vehicles during film production. The centre contains many important heritage buildings which have been conserved and adapted for reuse by the Studios tenants.

**FILM AND SCREEN  
INDUSTRY FACILITY**

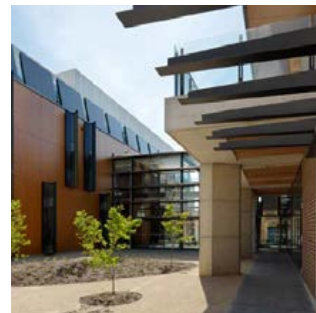
IN ASSOCIATION WITH  
COX RICHARDSON ARCHITECTS  
ADELAIDE, SA  
KAURNA COUNTRY  
COMPLETED: 2011

**CLIENT**  
ARTS SA

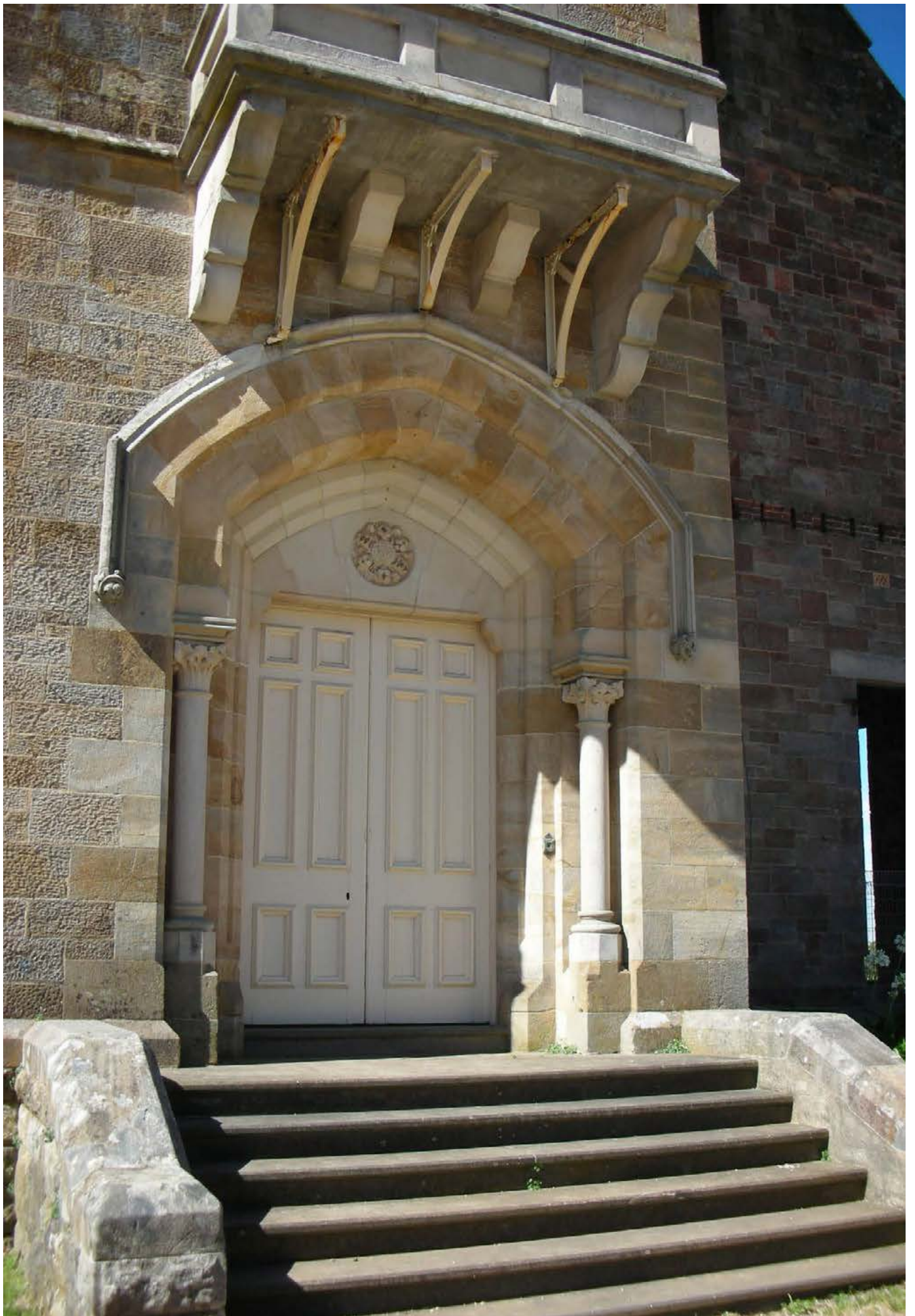
**PROJECT VALUE**  
\$42.95 MILLION

**AWARDS**

AIA 2012 (SA) COMMENDATION  
FOR HERITAGE,  
  
AIA 2012 (SA)  
THE KEITH NEIGHBOUR  
AWARD FOR COMMERCIAL  
ARCHITECTURE,  
  
AIA 2012 (SA) COMMENDATION  
FOR INTERIOR ARCHITECTURE,  
  
AIA 2012 NATIONAL AWARD FOR  
COMMERCIAL ARCHITECTURE









# MARBLE HILL

GRIEVE  
GILLET  
ARCHITECTS

**The State Heritage listed, former Vice Regal residence at Marble Hill, Ashton was erected in 1879 as the summer residence for the Governor of South Australia. The residence and garden was unfortunately gutted in a fierce bushfire in 1955.**

The ruin is now being rebuilt by new owners as a residence and working period garden.

Grieve Gillett Architects wrote a Conservation Plan for the residence, designed a new stone outbuilding and developed concepts to upgrade the existing stables. Site evidence, period photographs and original drawings will inform the original detailing and selection of materials for the reconstruction of the house.

**MARBLE HILL  
RECONSTRUCTION**  
MARBLE HILL, SA  
KAURNA COUNTRY  
COMPLETED: 2013

**CLIENT**  
MARBLE HILL HERITAGE GROUP









# MUSEUM OF ECONOMIC BOTANY

GRIEVE  
GILLET  
ARCHITECTS



## MUSEUM OF ECONOMIC BOTANY

ADELAIDE, SA  
KAURNA COUNTRY  
COMPLETED: 2008

### CLIENT

BOTANIC GARDENS OF  
ADELAIDE

### PROJECT VALUE

\$500,000

### AWARDS

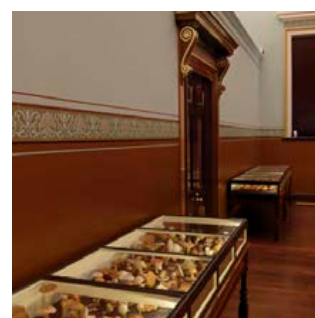
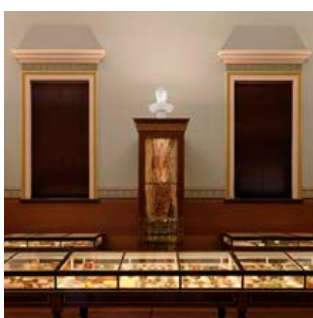
AIA 2012 (SA)  
DAVID SAUNDERS AWARD FOR  
HERITAGE



**Grieve Gillett Architects received the 2012 Australian Institute of Architects (SA) David Saunders Award for Heritage in recognition of their skilful restoration and refurbishment of the State Heritage listed 1881 Museum of Economic Botany.**

The Adelaide Botanic Garden's 1881 Museum of Economic Botany was conceived as a place to study and promote the value of botany within colonial South Australia. The building was designed by notable South Australian Architect EJ Woods and was a reflection of contemporary botanic and agricultural museums of the period. The building fell into disrepair by the 1990s. The Garden wished to restore the structure and reinstate the original internal layout as part of a project in the late 2000s. Grieve Gillett Architects was engaged in 2008 to restore significant building fabric and assist in the reinstatement of the 1880s museum layout, but with 21st century services and a new curatorial room.

All conservation decisions by the project team were based upon the principles and guidelines of the Aust ICOMOS Burra Charter. The resultant project has breathed new life into a significant, but suffering jewel in the crown of the Adelaide Botanic Garden. Visitor numbers have increased since opening and the Museum once again stands as a significant part of the 19th century character of the Botanic Garden.







# HORSHAM HERITAGE STUDIES + REGIONAL SURVEYS

GRIEVE  
GILLET  
ARCHITECTS

**In 2011, Grieve Gillett Architects (GGA) was commissioned by Horsham Rural City Council and Heritage Victoria to prepare a heritage study of the district. The project team was led by GGA, but also included consultants based in Western Victoria, who provided a local focus and appropriate skills for the project**

Public meetings, media releases, newsletters, online surveys and stakeholder workshops formed the basis of our community consultation strategy. The community workshops allowed the community to identify places of potential heritage value and ask questions about the project. The workshops also provided a sense of ownership of the Heritage Study process and outcomes.

A Thematic Environmental History of the district was written by the team's historian, Dr Helen Doyle, and it identified all the important stories which characterise the Wimmera district. The project team also travelled the roads of the district, identifying indicative places which illustrate the important themes and stories of Horsham.

Stage 2 of the study involved GGA undertaking detailed research to establish the heritage value of the local heritage and are also preparing heritage documentation for incorporation into Horsham's Planning Scheme.

## HERITAGE STUDY

HORSHAM, VIC

JARDWADJALICOUNTRY

COMPLETED: 2014

## CLIENT

HORSHAM RURAL CITY

COUNCIL + HERITAGE VICTORIA









# REVELATIONS CHAPEL CONSERVATION

GRIEVE  
GILLET  
ARCHITECTS

**Revelations Chapel was built in the mid-nineteenth century as the 'Christian Chapel' and later became the Hindmarsh Church of Christ. It is a State Heritage Place and is now part of the Adelaide Entertainment Centre.**

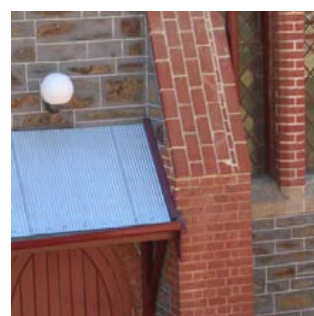
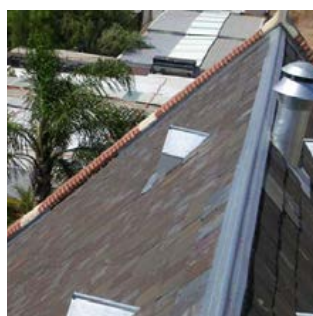
This project involved undertaking conservation works including cleaning of brickwork, repointing of bluestone and brickwork, seismic upgrade and internal painting.

All works were carried out to Australia ICOMOS Burra Charter principles – doing as little as possible, but as much as necessary – to maintain the heritage values of this significant Adelaide building.

**REVELATIONS CHAPEL  
CONSERVATION, ADELAIDE  
ENTERTAINMENT CENTRE**  
THEBARTON, SA  
KAURNA COUNTRY  
COMPLETED: 2008

**CLIENT**  
DEPARTMENT OF TRANSPORT,  
ENERGY & INFRASTRUCTURE

**PROJECT VALUE**  
\$600,000









# SMYTH CHAPEL

**Smyth Chapel was built in the West Terrace Cemetery in 1871 as a memorial to the late Vicar-General Smyth.**

This project involved reconstruction of the flèche, repairs to and cleaning of the stonework and repointing. All works were carried out to Australia ICOMOS Burra Charter principles.

**SMYTH CHAPEL CONSERVATION  
WEST TERRACE CEMETERY**

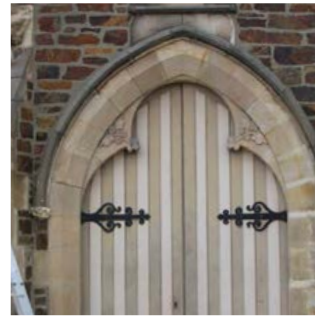
ADELAIDE, SA  
KAURNA COUNTRY  
COMPLETED: 2008

**CLIENT**

DEPARTMENT OF TRANSPORT,  
ENERGY & INFRASTRUCTURE

**PROJECT VALUE**

\$150,000









# BROOKMAN BUILDING

**Conservation works to Brookman building were undertaken to maintain the heritage values of this significant Adelaide building.**

The castellated limestone parapets topping the 1903 building were extensively decayed from corrosion of the embedded steelwork. Reconstruction required sequential dismantling, re-pinning and re-bedding of the parapet stones to prevent collapse under future seismic action.

In addition to the parapet works, the original damp proof course was renewed requiring excavation works around the basement of the building to a depth of three metres and the building facades were cleaned.

All works were carried out in accordance with Australian ICOMOS principles – 'doing as little as possible, but as much as necessary'

## **BROOKMAN BUILDING**

ADELAIDE, SA  
KAURNA COUNTRY  
COMPLETED: 2007

## **CLIENT**

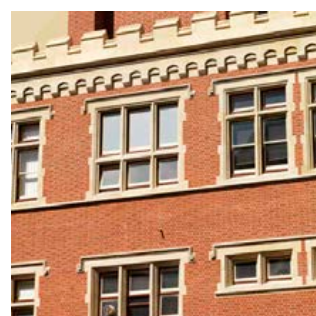
UNIVERSITY OF SA

## **PROJECT VALUE**

\$1.6 MILLION

## **AWARDS**

AIA 2009 (SA)  
COMMENDATION FOR HERITAGE





"...THE  
BUILDINGS OF  
OUR PAST CAN BE  
SUCCESSFULLY  
INTEGRATED INTO  
THE FABRIC OF  
CONTEMPORARY  
SOCIETY  
AND HAVE  
MEANINGFUL USE  
FOR PRESENT  
AND FUTURE  
NEEDS."  
JURY CITATION  
AIA (SA) 2005





# TORRENS PARADE GROUND



## TORRENS PARADE GROUND

ADELAIDE, SA  
KAURNA COUNTRY  
COMPLETED: 2004

### CLIENT

DEPARTMENT OF TRANSPORT,  
ENERGY & INFRASTRUCTURE

### PROJECT VALUE

\$4.5 MILLION

### AWARDS

AIA 2005 (SA)  
AWARD OF MERIT - HERITAGE  
  
IES 2004 (SA)  
LIGHTING DESIGN AWARD OF  
EXCELLENCE  
  
IES 2004 (AUSTRALIA & NZ)  
LIGHTING DESIGN AWARD OF  
EXCELLENCE  
  
EDMUND WRIGHT HERITAGE  
AWARD 2004  
HERITAGE PLACE (NON  
RESIDENTIAL)

**The State heritage listed Torrens Parade Ground and Training Depot was erected by the Commonwealth of Australia in 1936 as a military training depot and assembly ground. The building is now managed by the State Government and provides a central city location for several Ex-Services organisations, a home for the History Trust of South Australia and also a venue for a wide variety of community activities.**

The design solution was based on the heritage principles of the Australia ICOMOS Burra Charter, sustainable development principles and user requirements. Documentation provided detailed instructions for the conservation of heritage fabric, using best-practice methods. New works were contemporary in detail and alterations were reversible.

*"The application of innovative 21st century solutions in conserving the historical building, in the spirit of the Burra Charter, was well executed and exemplified by the Award of Merit...The dual challenges of retaining the historic integrity of the original building - while adapting for the functionality of new use - with the attendant changed expectations for safety and comfort of use - was well recognized and addressed. It is hoped that the project will serve to demonstrate that the buildings of our past can be successfully integrated into the fabric of contemporary society and have meaningful use for present and future needs." AIA Jury citation - 'Heritage' category 2005*



---

MINIMAL  
ALTERATION TO  
THE HERITAGE  
FABRIC OF  
THE BUILDING  
WAS ACHIEVED  
THROUGH  
CAREFUL  
PLANNING AND  
ATTENTION  
TO DETAIL,  
ESPECIALLY WITH  
RESPECT TO THE  
INCORPORATION  
OF MODERN  
SERVICES.

---





# BOTANIC GARDENS ADELAIDE ADMINISTRATION CENTRE

GRIEVE  
GILLET  
ARCHITECTS

**The Goodman Building, built in 1909 as the depot for Adelaide's then new electric tram system now accommodates the Adelaide Botanic Gardens Administration. The development conserves the heritage listed building depot and provides the Gardens with an eastern gateway.**

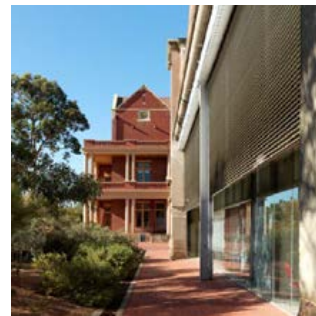
The Gardens Administration is located in the heritage listed Goodman Building. Minimal alteration to the heritage fabric of the building was achieved through careful planning and attention to detail, especially with respect to the incorporation of modern services. The building, together with the adjacent tram barn formed key components of the Botanic Wine and Rose master plan for the eastern boundary of the Adelaide Botanic Gardens.

**BOTANIC GARDENS OF  
ADELAIDE  
ADMINISTRATION CENTRE**  
ADELAIDE, SA  
KAURNA COUNTRY  
COMPLETED: 2001

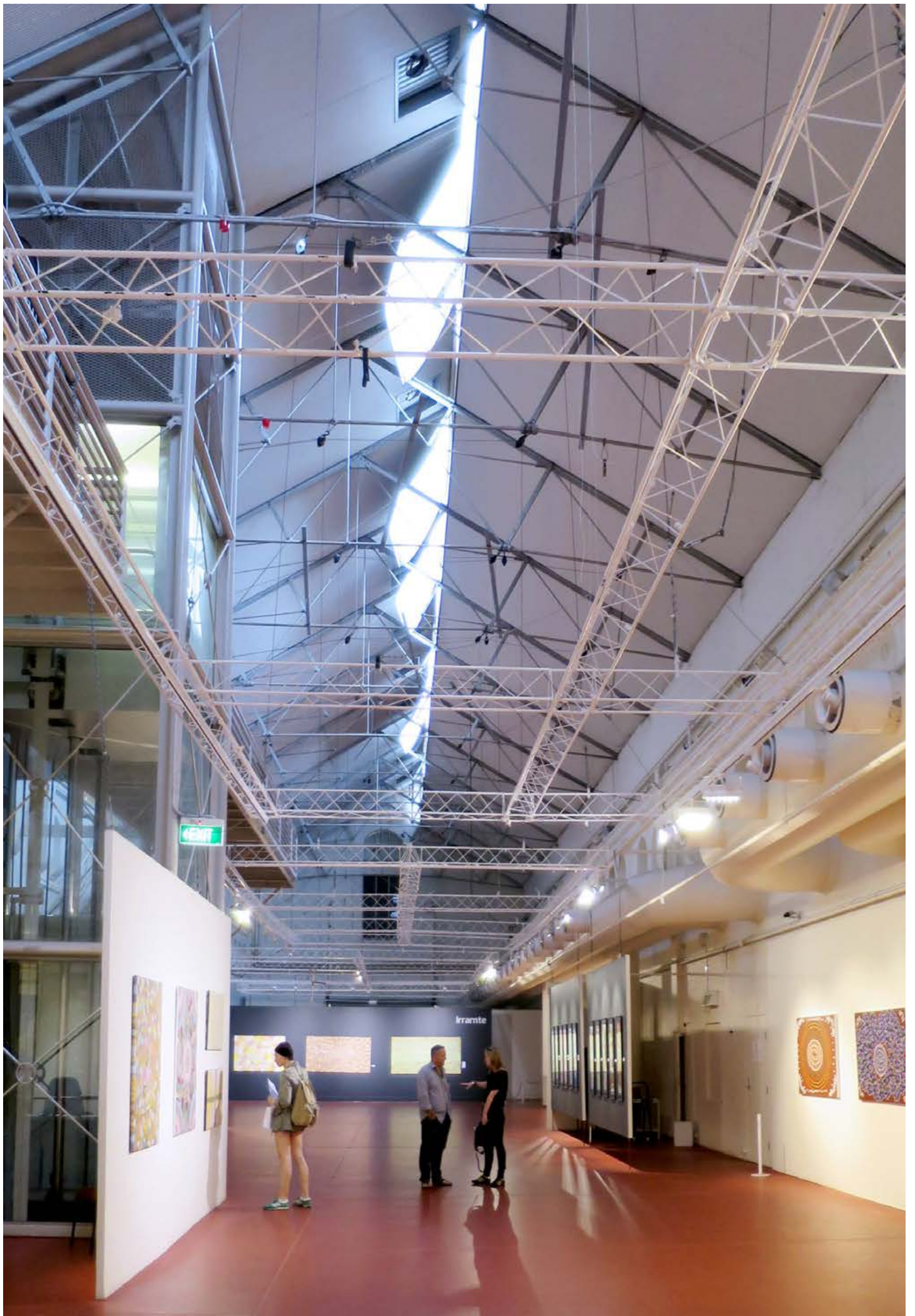
**CLIENT**  
BOTANIC GARDENS OF  
ADELAIDE

**PROJECT VALUE**  
\$7 MILLION

**AWARDS**  
IES 2001  
AWARD OF COMMENDATION,  
LIGHTING DESIGN.









# TANDANYA ABORIGINAL CULTURAL CENTRE

GRIEVE  
GILLET  
ARCHITECTS

**Tandanya National Aboriginal Cultural Institute is housed in the former Electric Lighting and Traction Co. Power Station, erected in 1901. The building is entered on the State Heritage Register and the Register of the National Estate.**

The facility is designed to provide a focus and showcase for contemporary Aboriginal Culture. It incorporates a 300 seat theatre, retail sales, cafe, controlled atmosphere galleries, workshops and a 850m2 exhibition hall.

A 'Rainbow Serpent' footpath mural, by artist Bluey Roberts, was incorporated as a part of the overall redevelopment of the building's frontage. Perhaps the most difficult task for all concerned in this project was the balance between user requirements, the capital budget and the interpretation of the heritage values of the building.

## **TANDANYA ABORIGINAL CULTURAL CENTRE**

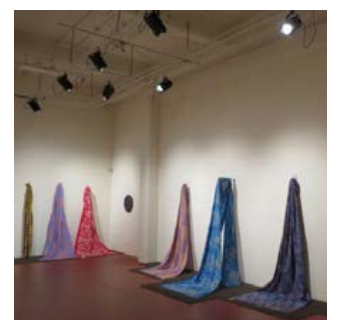
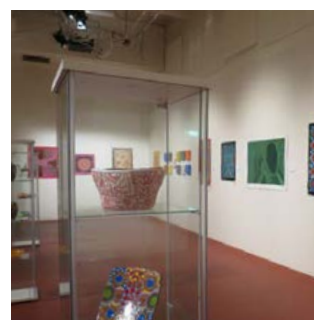
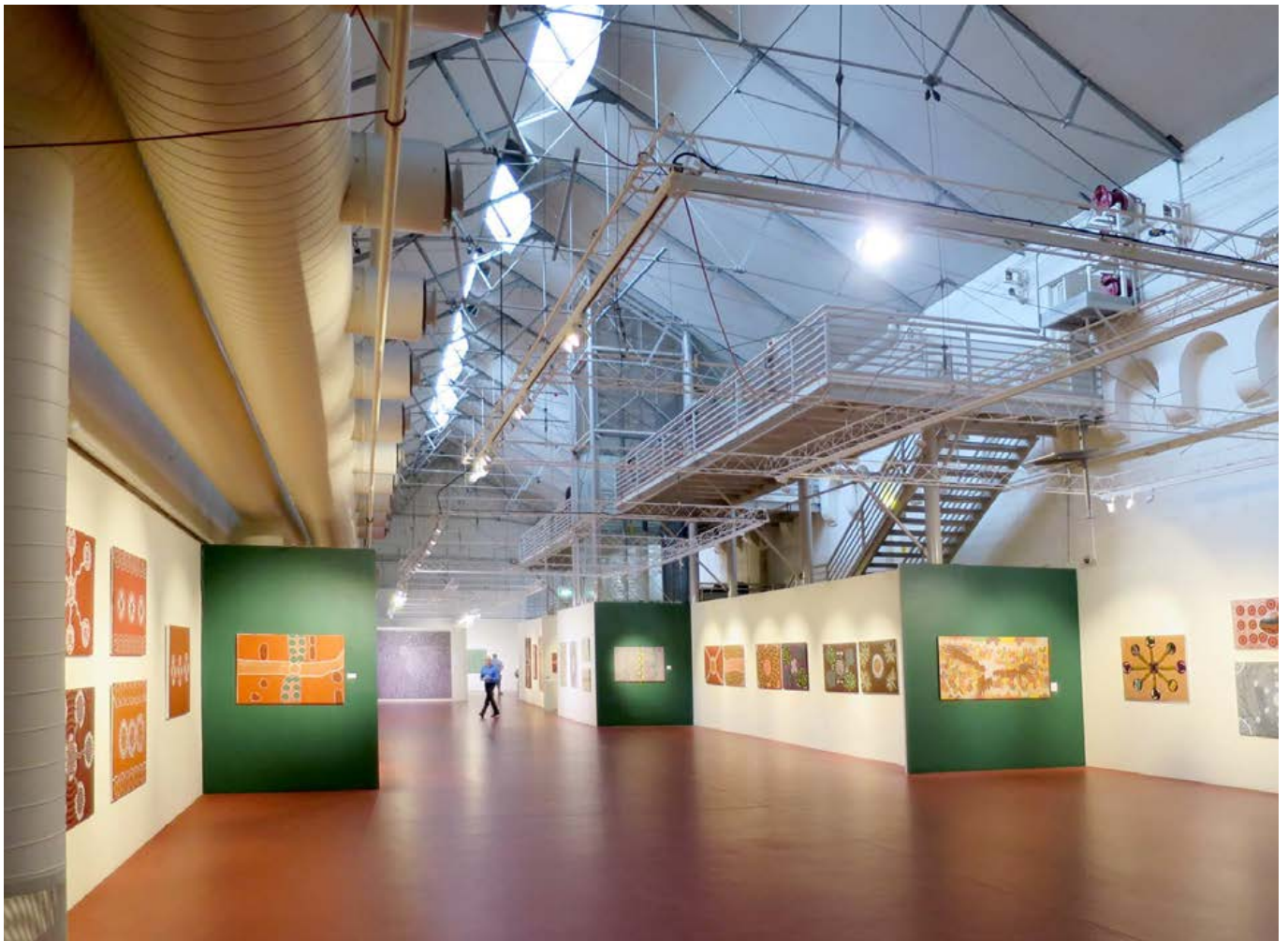
ADELAIDE, SA  
KAURNA COUNTRY  
COMPLETED: 1989

### **CLIENT**

SA GOVERNMENT

### **AWARDS**

CIVIC TRUST AWARD 1990  
BOMA COMMENDATION 1990







## 5\_ OUR PEOPLE

**Our people are important. We recognise that each individual brings a diverse range of experience and background to the team, which when combined in a creative studio environment, produces significant outcomes.**

Each project is led by an Associate or Senior Project Architect and is supported by other professional staff to adequately resource, coordinate and manage activities. Regular project team meetings maintain communication and planning of activities and progress. We aim to maintain continuity of staff throughout the length of a project.

| NAME               | ROLE   | QUALIFICATION                                 | REG. ARCHITECT | YRS EXP |
|--------------------|--|---|----------------|---------|
| Paul Gillett       | Director                                     | BArch(Hons)                                   | •              | 41      |
| Nicole Dent        | Director                                     | BDesSt, BArch(Hons)                           | •              | 26      |
| Heather Wasley     | Director                                     | BDesSt, MArch                                 | •              | 23      |
| Sarah Paddick      | Senior Associate, Senior Architect           | BArch(Hons)                                   | •              | 33      |
| David McLeod       | Senior Associate, Senior Architect           | BArch, BVisArts(Hons)                         | •              | 26      |
| Elizabeth Little   | Associate, Senior Architect                  | BDesSt, BArch                                 | •              | 28      |
| Tim Fenton         | Associate, Senior Architect                  | BDesSt, BArch(Hons)                           | •              | 25      |
| Shae Taylor        | Associate, Senior Architect                  | BArch   | •              | 20      |
| Amanda Rebbeck     | Associate, Senior Architect                  | BDesSt, BArch                                 | •              | 25      |
| India Allan        | Associate, Senior Interior Designer          | BInteriorDesign, GradDipSustainableDesign     |                | 30      |
| Jane Monk          | Senior Architect + Urban Designer            | BDesSt, BArch(Hons), MAUrbanDesign            | •              | 26      |
| Emma Scott         | Senior Architect                             | BDesSt, MArch                                 | •              | 17      |
| Ben Van Loggem     | Senior Architect                             | BArchSt, MArch                                | •              | 10      |
| Lauren Jeans       | Senior Architect                             | BScHonsArchSt, PgDipAdvArchDes                | •              | 10      |
| Tessa Sare         | Senior Architect                             | BArchSt, MArch, GradDipUrban&RegionalPlanning | •              | 14      |
| Sarah Burge        | Senior Architect                             | BArchSt, MArch, MDes                          | •              | 11      |
| Zac Lovell         | Senior Architect + Urban Designer            | BArch, MArch, MUrbDes                         | •              | 10      |
| Kimberley Harbison | Architect                                    | MArch   | •              | 18      |
| Enzo Ferraro       | Architect                                    | BArchSt, MArch                                | •              | 9       |
| Ava Kim            | Architect                                    | BDes, MArch                                   | •              | 8       |
| Daniel Grilli      | Architect                                    | BArchSt, MArch                                | •              | 6       |
| Haolin Bi          | Architect                                    | BArchSt, MArch                                | •              | 5       |
| Hunter Crisp       | Architect                                    | BArchSt, MArch                                | •              | 5       |
| Phoebe Tse         | Graduate of Architecture + Interior Designer | BInterior Arch, BArchSt, MArch                |                | 11      |
| James Nuangki      | Graduate of Architecture                     | BArchSt, MArch                                |                | 11      |
| Nick Parker        | Graduate of Architecture                     | BArchSt, MArch                                |                | 9       |
| Callum Reilly      | Graduate of Architecture                     | BArchSt, MArch                                |                | 5       |
| Abitha George      | Graduate of Architecture                     | BArchSt, MArch                                |                | 2       |
| Subook Samridhi    | Graduate of Architecture                     | BArchSt, MArch                                |                | 2       |
| Riya Sthapit       | Graduate of Architecture                     | BArch (Nepal), MArch                          |                | 4       |
| Billie Power       | Senior Interior Designer                     | BInteriorArch                                 |                | 15      |
| Jody Allen         | Interior Designer                            | BInteriorArch, DipInteriorDesign, DipBus      |                | 30      |
| Georgina Davis     | Interior Designer                            | BInteriorArch                                 |                | 8       |
| Daryl Talbot       | Senior Architectural Technician              | BArch   |                | 25      |
| Adam Sickerdich    | Senior Architectural Technician              | DBldgDesTech                                  |                | 19      |
| Garth Davos        | Senior Architectural Technician              | DBldgDesTech                                  |                | 19      |
| Kym Barwell        | Senior Architectural Technician              | DBldgDesTech                                  |                | 19      |





## 6\_ GRAPHIC CAPABILITY

**Grieve Gillett Architects has in-house capability to produce a range of presentation styles and images suitable for client presentation, stakeholder consultation and project marketing. These presentation techniques include hand drawn sketches, 3D line model, basic 3D model, computer rendered images. Our highly skilled architectural technicians can also produce animations and video fly-throughs and within relatively short timeframes.**

We use a combination and variety of these techniques during the project development to accurately communicate design concepts, context and fit, spatial qualities, wayfinding and views, natural and artificial lighting, solar penetration and shading, materials, colours and finishes.

Following initial hand sketches, we develop 3D models early in the Sketch Design phase. This allows rapid design development, effective consultation with clients and consultants and early contextual exploration. Aerial and street or context views can be established using photomontage to assist authority consultation, authority applications and approvals. 3D model development allows establishment of shadow diagrams covering neighbouring properties and solar shading and fenestration protection for project ESD and sustainability performance. Our specialist lighting knowledge combined with our high quality graphic and rendering skills allows production of accurate night-time lighting and artificial illumination images.

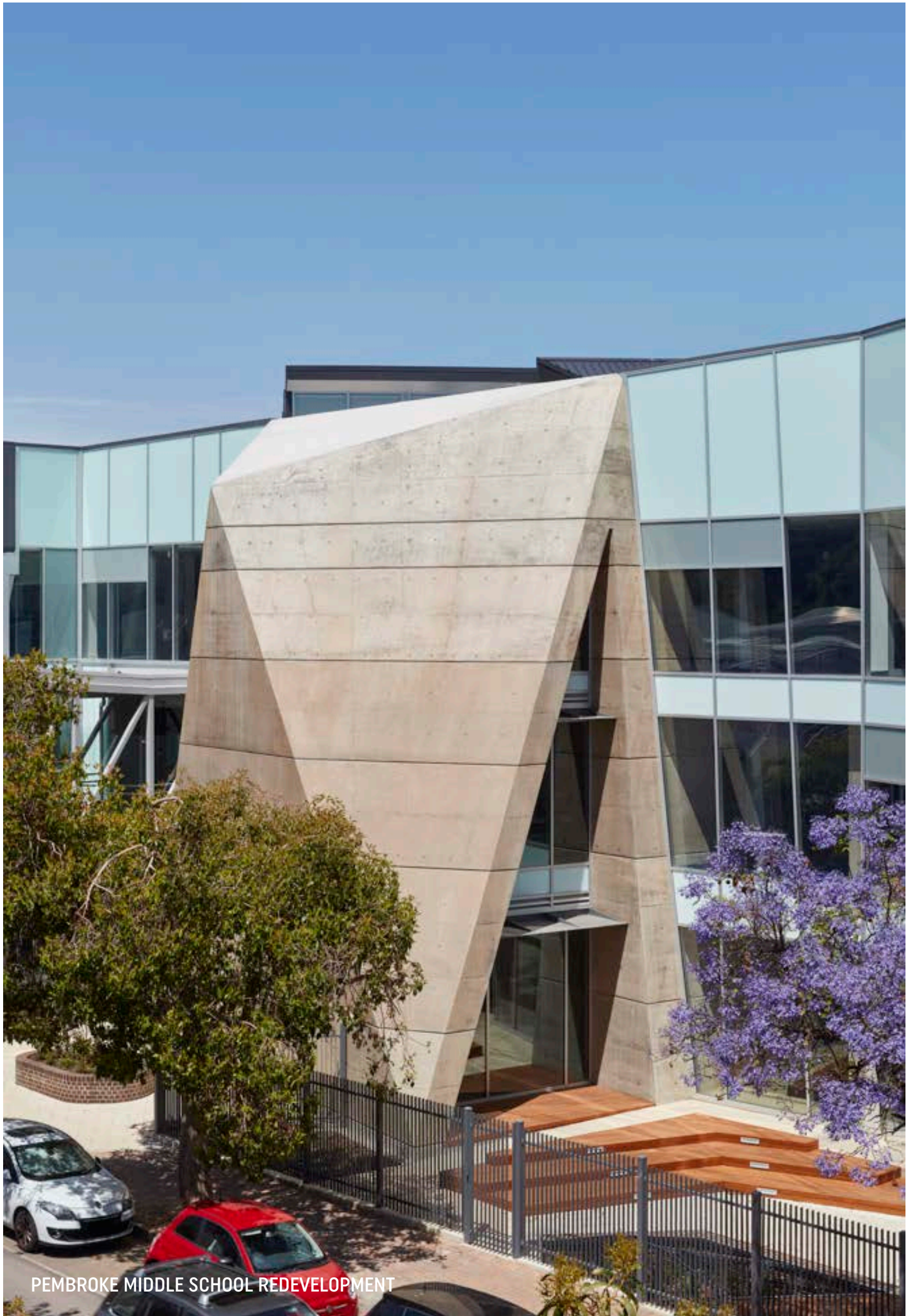
We have assisted many of our clients and government agencies with preparing quality graphic materials and design documentation to support successful funding applications and marketing materials.

### TECHNICAL RESOURCES

GGA use multiple technical computer software packages to produce presentation materials and to manage the project delivery.

| PROGRAM              | APPLICATION                        |
|----------------------|------------------------------------|
| AUTOCAD              | 2D Drafting                        |
| REVIT                | 3D Drafting                        |
| LUMION PROFESSIONAL  | Rendering, Animation               |
| V-RAY                | Rendering                          |
| SKETCH UP PRO        | 3D Modelling                       |
| RHINO                | 3D Modelling                       |
| TWIN MOTION          | 3D Modelling, Rendering, Animation |
| ENSCAPE              | Rendering, Animation               |
| ADOBE CREATIVE CLOUD | Publishing, Presentation           |
| MICROSOFT 360        | Project Administration             |
| MS PROJECT           | Project Programming                |
| WORKFLOW MAX         | Project Tracking                   |
| XERO                 | Financial Management               |
| DELTEK               | Document Management                |





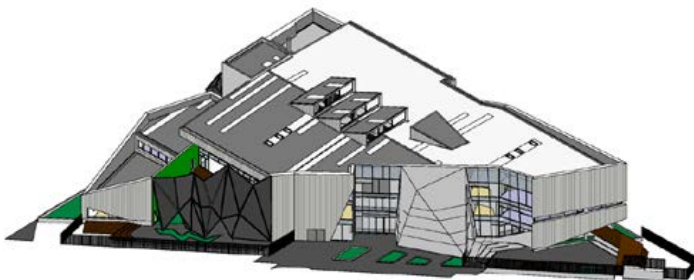
PEMBROKE MIDDLE SCHOOL REDEVELOPMENT

## 7\_ BUILDING INFORMATION MODELLING (BIM)

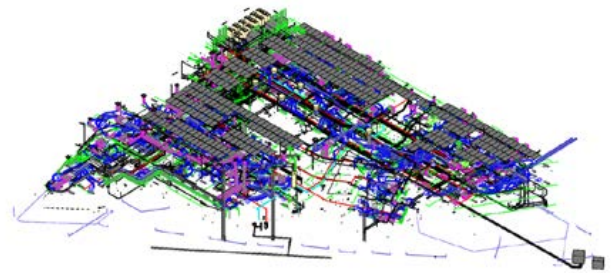
**Grieve Gillett Architects can provide a fully integrated, complete construction documentation service commencing at design concept phase, transitioning through to post documentation. We have considerable experience in the field of BIM and are recognised within the industry for producing the highest quality 'Construction Calibre Models'.**

GGA delivers the highest quality construction documentation through development of a fully detailed 3D Construction Calibre model. Validation and co-ordination by GGA of all models from the consultant team and sub-contractors minimises costly rework during construction and ensures a successful outcome for our clients. This virtual construction approach provides a high degree of confidence that previous documentation delivery methods failed to achieve. GGA can also deliver a 4D and 5D consulting service to link cost estimation (5D) and scheduling (4D) to the data rich 3D Construction Calibre model enabling greater control over time and cost through rapid value engineering analysis.

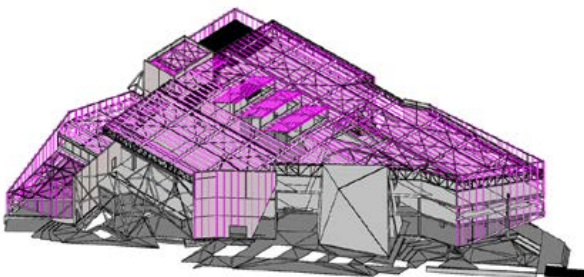
We have extensive experience in coordinating a comprehensive range of specialist consultants for major construction projects and promote an OpenBIM delivery and methodology which allows consultants without restriction to utilise the most appropriate software for their area of specialisation. Building upon the data rich information embedded within the 3D, 4D and the 5D process, the entire team can provide the relevant data for their discipline in COBie format suitable for Facilities Management (6D) software to facilitate the ongoing DBO (Design-Build-Operate) Lifecycle requirements for the Client's asset.



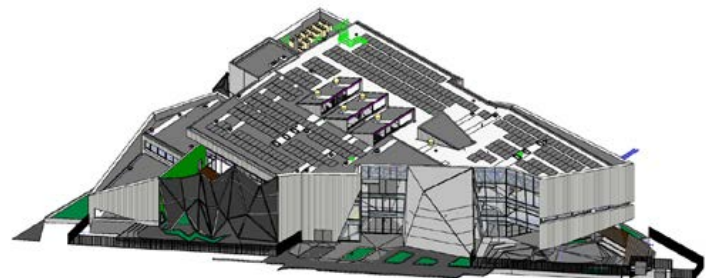
ARCHITECTURAL



SERVICES



STRUCTURAL



COMBINED MODEL

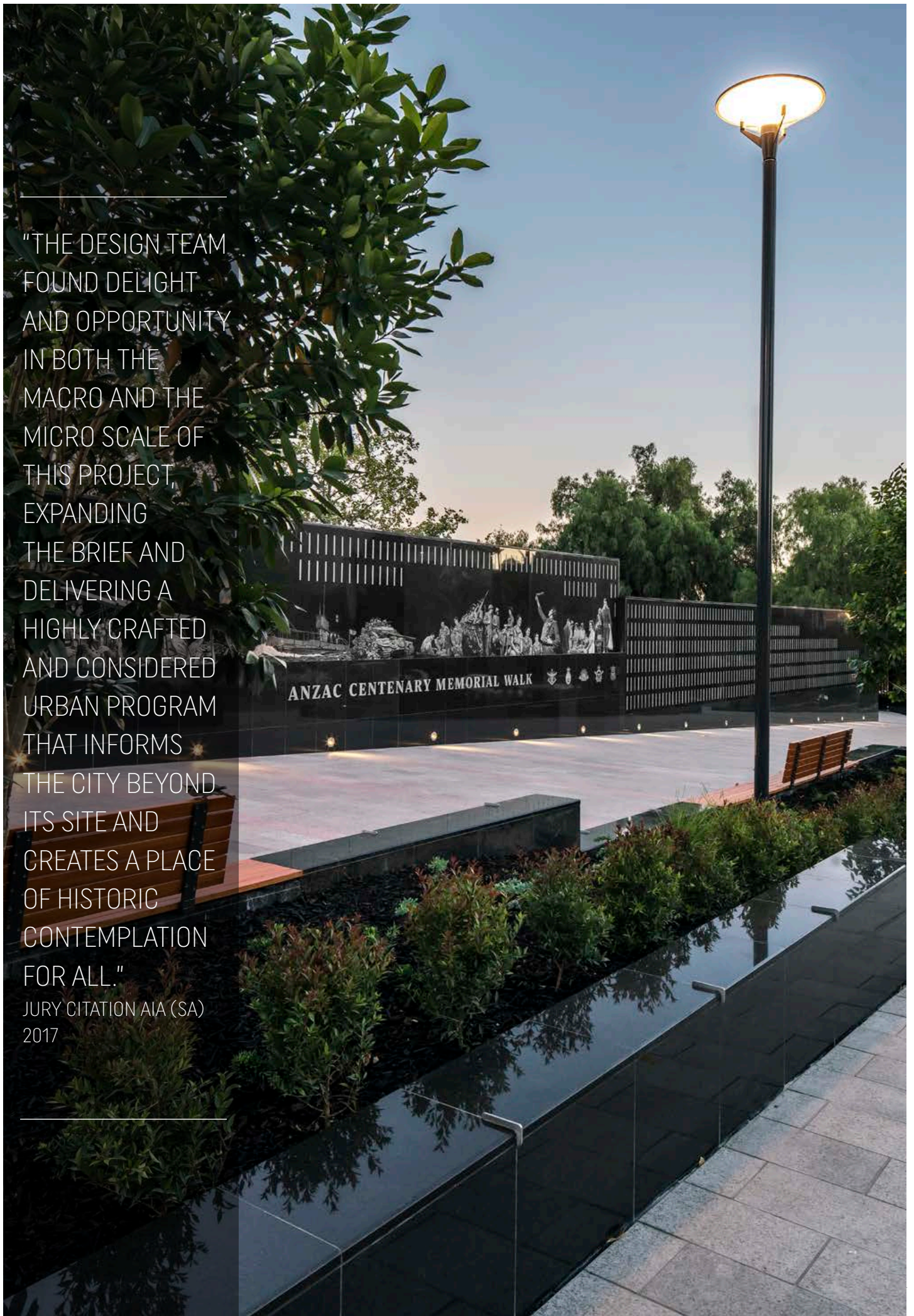


---

"THE DESIGN TEAM  
FOUND DELIGHT  
AND OPPORTUNITY  
IN BOTH THE  
MACRO AND THE  
MICRO SCALE OF  
THIS PROJECT,  
EXPANDING  
THE BRIEF AND  
DELIVERING A  
HIGHLY CRAFTED  
AND CONSIDERED  
URBAN PROGRAM  
THAT INFORMS  
THE CITY BEYOND  
ITS SITE AND  
CREATES A PLACE  
OF HISTORIC  
CONTEMPLATION  
FOR ALL."

JURY CITATION AIA (SA)  
2017

---





# 8\_ SELECTED AWARDS + ACHIEVEMENTS

## FRIDA & DIEGO: LOVE & REVOLUTION EXHIBITION

- 2024 AIA (SA) Award for Small Project Architecture
- 2024 AIA (SA) City of Adelaide Prize – Commendation – People's Choice

## YATALA LABOUR PRISON REDEVELOPMENT IN ASSOCIATION WITH GUYMER BAILEY ARCHITECTS

- 2024 AIA (SA) Award for Public Architecture

## HEATHFIELD HIGH SCHOOL

- 2024 LEAD (Australasia) Commendation for New Building(s) or Facilities – Large

## U TURN CONSTRUCTION PATHWAYS PROGRAM

- 2024 LEAD (Australasia) Commendation for Innovative Education Initiative

## GOODMAN BUILDING CONSERVATION

- 2023 AIA (SA) David Saunders Award for Heritage Architecture

## DYMOCKS HERITAGE STORE

- 2023 AIA (SA) City of Adelaide Prize – People's Choice

## CASA DEL BAMBINO

- 2022 AIA (SA) Commendation for Residential Architecture (Alterations and Additions)

## ST THOMAS SCHOOL ECOLOGY + STEAM CENTRE

- 2021 LEA (Australasian) Award for Small Project (Under \$2m)

## PEMBROKE MIDDLE SCHOOL REDEVELOPMENT

- 2020 AIA (SA) Award for Educational Architecture
- 2020 AIA (SA) Colorbond Award for Steel Architecture
- 2020 AIA (SA) Commendation for Interior Architecture

## HAWTHORN RESIDENCE

- 2020 AIA (SA) Commendation for Residential Architecture (Alterations and Additions)

## LORETO COLLEGE STAFF FACILITIES

- 2019 LEA (SA/NT) Commendation for Renovation/Modernisation (Under \$5m)

## ST MARY'S COLLEGE REDEVELOPMENT

- 2019 AIA (SA) Award for Educational Architecture
- 2019 AIA (SA) City of Adelaide Prize – People's Choice

## HILTON ADELAIDE GYM PAVILION

- 2019 AIA (SA) Commendation for Small Project Architecture

## BALIOI RESIDENCE

- 2019 AIA (SA) Commendation for Residential Architecture Houses (New)

## PEMBROKE SCHOOL 'OLD WATULUNGA' ENVIRONMENTAL LEARNING CENTRE

- 2018 AIA (SA) Commendation for Educational Architecture

## CRAYON HOUSE

- 2017 AIA (SA) John S Chappel Award for Residential Architecture – Houses (New)
- 2017 AIA (SA) Award for Sustainable Architecture

## ANZAC CENTENARY MEMORIAL WALK

- 2017 AIA (SA) AIA Gavin Walkley Award for Urban Design
- 2017 AIA (SA) City of Adelaide Prize
- 2017 AIA (SA) City of Adelaide People's Choice Award
- 2016 Australian Civic Trust Colonel William Light Award for Excellence in Design

## PETALUMA CELLAR DOOR

- 2017 AIA (SA) Commendation for Commercial Architecture

## MT LOFTY OBELISK

- Australian Civic Trust Awards 2016 Heritage Award

## HOUSE ON MAYFAIR

- 2016 AIA (SA) The Marjorie Simpson Award for Small Project Architecture

## FADE TO GREY

- 2016 AIA (SA) Award for Residential Architecture (Alterations and Additions)

## TUSMORE RESIDENCE

- 2016 AIA (SA) Award for Residential Architecture – Houses (New)

## ST FRANCIS XAVIER CATHEDRAL PIPE ORGAN

- 2016 AIA (SA) Commendation for Heritage

## BLACKLINE

- 2015 AIA (SA) Award for Small Project Architecture

## GOODWOOD JUNCTION RAIL GRADE SEPARATION

- 2014 Civil Contractors Federation (CCF)
- 2014 South Australian Earth Award
- 2014 CCF National Earth Award

## BURNSIDE RESIDENCE

- 2014 IES – Award of Commendation – Lighting Design

## ADELAIDE CENTRAL SCHOOL OF ART

- 2014 AIA (SA) Architecture Award for Heritage

## JAMFACTORY AT SEPPELTSTFIELD

- 2014 AIA (SA) Commendation for Sustainable Architecture

## UNISA CITY EAST PUBLIC REALM

- 2014 AIA (SA) Commendation for Urban Design
- 2014 IES Award of Commendation – Lighting Design

## TOORAK GARDENS RESIDENCE

- 2014 AIA (SA) Award for Residential Architecture (Alterations and Additions)
- 2014 AIA (SA) The Adelaide Review People's Choice in Residential Architecture

## UNLEY RESIDENCE

- 2014 AIA (SA) Commendation in Residential Architecture (Alterations and Additions)

## GOOLWA BEACH RESIDENCE

- 2014 AIA (SA) The John S Chappel Award for Residential Architecture – Houses (New)
- 2013 IES Award of Excellence – Lighting Design

## ROSE PARK RESIDENCE

- 2013 AIA (SA) Architecture Award in Residential Architecture

## NORTHERN COMMUNITY MENTAL HEALTH

- 2013 DIA (SA) Special Mention in Built Environment

## GRENFELL PLAZA FOUNTAIN

- 2013 IES Award of Excellence – Lighting Design

## GOOLWA BEACH HOUSE

- AIA 2013 (SA) Architecture Award in Sustainable Architecture
- AIA 2013 (SA) Commendation in Residential Architecture

## THE DEPOT

- 2013 AIA (SA) City of Adelaide Prize – People's Choice

## ADELAIDE STUDIOS

### IN ASSOCIATION WITH COX RICHARDSON

- 2012 AIA National Award for Commercial Architecture
- 2012 AIA (SA) Keith Neighbour Award for Commercial Architecture
- 2012 AIA (SA) Commendation – Heritage
- 2012 AIA (SA) Commendation – Interior Architecture

## MUSEUM OF ECONOMIC BOTANY CONSERVATION WORKS

- 2012 (SA) David Saunders Award for Heritage Architecture

## NORWOOD RESIDENCE

- 2012 AIA (SA) John S Chappel Award for Residential Architecture

## FLINDERS UNIVERSITY HEALTH SCIENCES TEACHING BUILDING

- 2012 MBA (SA) Award for Excellence in Commercial / Industrial Building \$5M-\$10M
- 2011 AIA (SA) People's Choice Award
- 2011 AIA (SA) Commendation for Public Architecture
- 2012 Steel Design Awards (SA) High Commendation – Large Projects
- 2010 IES – Award of Commendation – Lighting Design

## YALUMBA – SIGNATURE CELLAR AND TANKS 11 + 12

- 2011 AIA (SA) The Robert Dickson Award for Interior Architecture
- 2010 IES Award of Commendation – Lighting Design

## SOUTH AUSTRALIAN MUSEUM BIODIVERSITY GALLERY

- 2011 AIA (SA) Award of Excellence in Collaborative Design

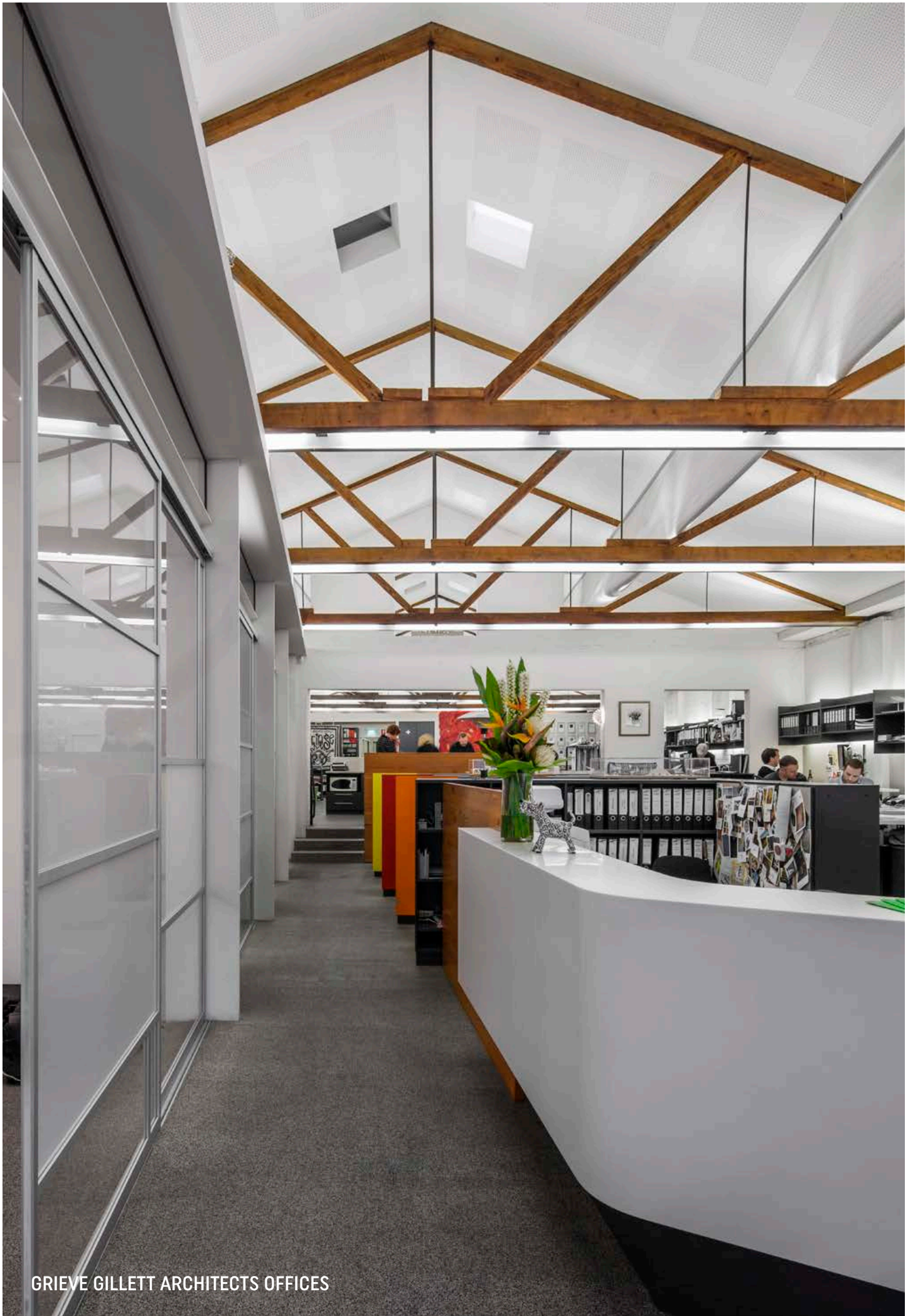
## JANE'S HOUSE

- 2009 AIA (SA) Commendation for Residential Architecture
- 2009 AIA (SA) Commendation for Interior Architecture

## GRIEVE GILLET OFFICE – PIRIE STREET

- 2008 IES Award of Excellence – Lighting Design





GRIEVE GILLETT ARCHITECTS OFFICES

## 9\_ TESTIMONIALS

"I worked closely with the Grieve Gillett Architects team on the design of Adelaide Studios which was of a truly unique nature, firstly as it involved refurbishment of the historic Administration building to house the SA Film Corporation and the 27 other Screen Industry Tenants and secondly the building of the new Studio, Production and acoustic Post Sound facilities at the rear.

Grieve Gillett Architects's strong collaborative approach ensured all details of the design were met. Their liaison work with the Screen Industry was an integral part to the success of this project. At the end of the design period, the confidence from the industry in this project was very positive.

### JO MULCAHY

Former Studio and Production Services Manager  
South Australian Film Corporation

"Working with a limited budget and time constraints between event periods, Grieve Gillett Architects transformed the venue into what is now known as The Ellington - evoking the spirit of the 1920's in a contemporary new setting. The kitchen was also successfully re-designed to increase output and provide service efficiencies without major structural changes.

We are thrilled with the end result. Grieve Gillett Architects really met the design brief, and have delivered an elegant, contemporary space which now fits perfectly in EPICURE'S portfolio of unique venues."

### AARON BOND

Regional Operations Manager  
EPICURE Adelaide

"[Grieve Gillett Architects are] very professional, good listeners who take their time to ensure they understand and meet client requirements, collaborative approach, develop effective relationships with all team members (client, user groups, sub-consultants, contractor), very good control and balancing of time, cost and quantity."

### SARAH LYNDIS

Project Manager: City East  
University of South Australia

"As a cost manager I have found the awareness and appreciation of both capital and recurrent costs on construction projects to be wholly conducive to a successful outcome. Moreover, individual members of staff have consistently demonstrated high levels of commitment to each of the projects I have been involved in. They are skilled in communicating in both oral and written form, and clearly benefit from a supportive management team and organisational structure."

### ADRIAN HOWARD

Associate, Cost Consultant  
Aqenta Consulting

"Sarah Constructions worked with Grieve Gillett Architects for the delivery of Brown's House Administration Redevelopment at Wilderness School, which involved demolition of an existing 1950s building abutting the heritage listed Brown's House and construction of a new infill building.

Grieve Gillett Architects understood programme constraints and were responsive to project timeframes and response timeframes driven by the project delivery programme. [They] were flexible in their approach, maintaining design intent while working with challenges arising from exposed latent conditions. The team had a clear understanding of the project budget, exhibited a willingness to work within the budget constraints and to actively participate in value management processes."

### PAUL MARINO

Project Manager  
Sarah Constructions

"Grieve Gillett Architects have created a vibrant and stimulating work environment. The process of briefing, design and construction was made clear and enjoyable with their good natured manner and excellent design vision. The strategic planning of the facility is a particular success within an existing complex floor plate with heritage constraints."

### MICHAEL LIVORI

CEO  
Eastern Health Authority



# GRIEVE GILLET ARCHITECTS

ARCHITECTURE  
INTERIORS  
URBAN DESIGN  
HERITAGE

243 Pirie Street Adelaide  
South Australia 5000

T +61 8 8232 3626  
admin@ggarc.com.au

**ggarc.com.au**